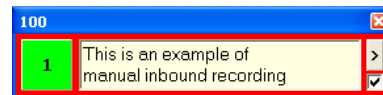
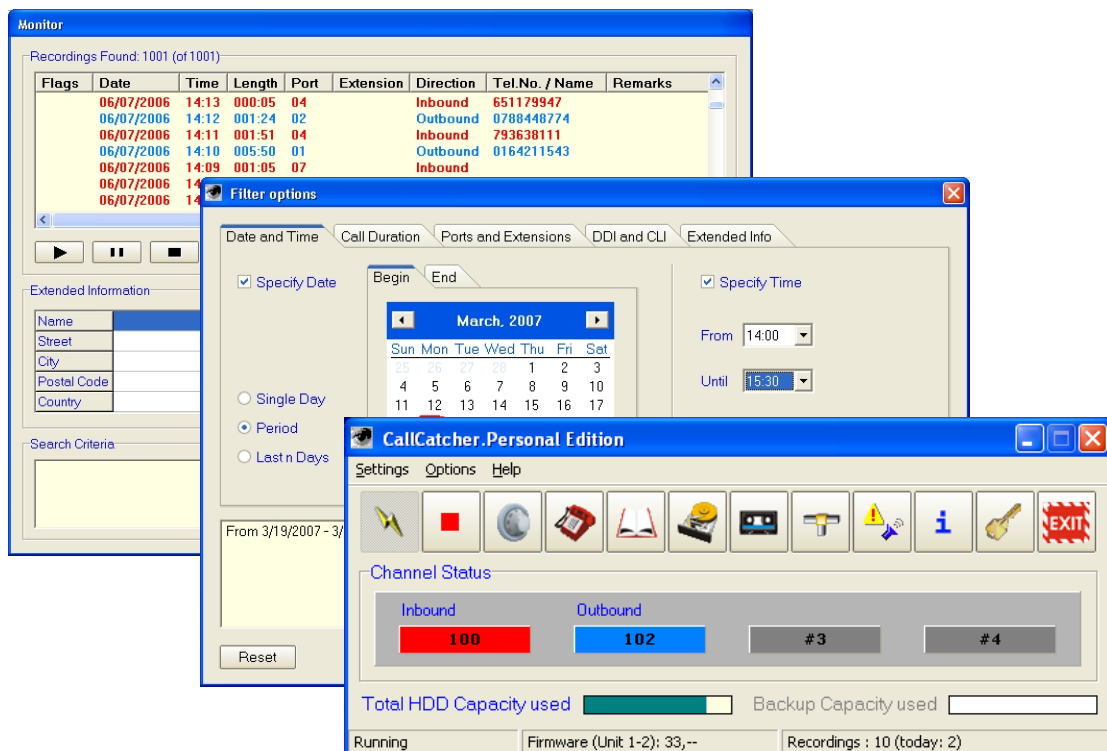


CallCatcher.Personal[®]

Users Manual



Version: 2.42 UK

Date: November 2007

Reference: CCR-PERSONAL-UK242

NOTICE

Information contained in this document is believed to be accurate and reliable. However, due to ongoing product improvements and revisions, **VOICERECORDING.COM** cannot guarantee the accuracy of this document after the date published nor can it accept responsibility for errors or omissions.

This document and the software and / or hardware which it describes is subjected to change without notice.

The products described in this document may not be used in a life support application.

VOICERECORDING.COM shall not be liable for any incidental or consequential damages due to the use of its products.

VOICERECORDING.COM acknowledges that various products or trademark names referred to in this document are subjected to copyright and / or trademark by their respective registered holders.

CallCatcher™, CallExport™, CallLive™, CallMonitor™, CallPlayer™, CallView™, CallLink™, CallAgent™, CallSurfer™, CallCapture™ and **VOICERECORDING.COM™** are registered trademarks of **VOICERECORDING.COM**.

Contents

1. INTRODUCTION	4
1.1 Product Description	4
1.1.1 Features	4
1.1.2 Minimum System requirements	5
1.1.3 Recommendations	5
2. INSTALLATION	6
2.1 Preparation.....	6
2.2 Windows Usage and Settings.....	6
3. BOARD SETUP.....	7
3.1 Speech Activated Recordings	8
3.2 Auto-Starting the System	9
4. USING THE SYSTEM.....	10
4.1 Main Screen.....	10
4.1.1 Line Status Display	11
4.1.2 System Status Bar	11
4.1.3 CallCatcher.Personal Speed-Buttons	12
4.1.4 Manual Record / Add Notes.....	14
4.1.5 About panel	15
4.2 Language support	16
5. USER MANAGEMENT.....	17
5.1 Local and Remote Settings.....	18
5.1.1 Encryption	19
6. PROPERTIES PORT	20
6.1 General Settings	21
6.1.1 Audio Compression	21
6.1.2 Connection to CO (External) Lines.....	21
6.1.3 Connection to Extensions.....	21
6.1.4 Port Name	23
6.1.5 Change CDI to Inbound.....	23
6.1.6 Change CDI to Outbound....	23
6.2 Outbound Settings.....	24

6.2.1	Min / Max Recording Time.....	24
6.2.2	Dialled Number Threshold	24
6.2.3	Keep Call Information Details	25
6.2.4	Phonebook Data inclusion.....	25
6.2.5	Start Recording after a Connect.....	25
6.3	Inbound Settings	26
6.3.1	Min / Max Recording Time.....	26
6.3.2	Keep Call Information Details	26
6.3.3	Phonebook Data inclusion.....	27
6.3.4	Start Recording after a Connect.....	27
6.4	Voice Settings	28
6.4.1	Min / Max Recording Time.....	28
6.4.2	Keep Call Information Details	28
6.4.3	Phonebook Data Inclusion.....	29
7.	PHONEBOOK ENTRY.....	30
7.1	Entering Phonebook Data.....	31
7.2	Importing External Data	31
8.	HARDDISK MANAGEMENT	32
8.1	Remove Recordings Automatically	33
8.2	Backup.....	34
8.2.1	Backup Settings.....	35
9.	MONITOR	37
9.1	Flags.....	38
9.2	Extended Information	38
9.3	Playing Voicerecordings	39
9.4	Exporting and Erasing Recordings.....	40
9.5	Detailed File Information.....	40
9.6	Filter Options.....	41
9.6.1	Date Criteria (Period)	41
9.6.2	Time Criteria	41
9.6.3	Date Criteria (Last n Days).....	42
9.6.4	Call Duration Criteria.....	42
9.6.5	Port Criteria.....	43
9.6.6	Dialled Number and Caller-ID Criteria.....	44
9.6.7	Extended Info Criteria.....	45
10.	EXTRA SETTINGS	46
10.1	System Alarm Settings.....	46
10.2	Sound.....	47

10.2.1	Enable CLI Popup	47
11.	STATISTICS	48
12.	CLIENTS	50
12.1	Network Connection Status.....	51
13.	CALL-LIVE	52
13.1	Login.....	52
14.	CALL-PLAYER.....	54
14.1	Saving Recordings Locally	55
14.2	Login.....	55
14.3	Language support	56
14.4	Local (backup) Files	56
14.5	Extended Information.....	56
14.6	Drag & Drop.....	57
14.7	Selecting a Sound resource.....	58
15.	WIRING DIAGRAMS	59
15.1	Analog PCI.....	59
15.2	Digital & ISDN PCI.....	59
15.3	Analog USB	59
15.4	Digital & ISDN USB	59
16.	ANALOG PCI.....	60
17.	DIGITAL PCI.....	61
18.	ISDN PCI	62
19.	ANALOG USB.....	63
20.	DIGITAL USB.....	64
21.	ISDN USB	65

1. INTRODUCTION

1.1 PRODUCT DESCRIPTION

CallCatcher.Personal Edition is an advanced small channel count entry-level Win-2000, Win-XP, Win-2003 and Windows Vista Call Monitoring, Recording and Logging system.

The CallCatcher.Personal system monitors internal PBX lines or external CO lines in a transparent and non-intrusive way. This means that external callers or users of internal extensions cannot hear or notice that their call is being monitored. CallCatcher.Personal monitors each line, to which it is connected to, in such a way that the line itself is not affected at all. Only registered users will be able to access, start or stop, monitor or playback calls, manage the recordings or add extra information to the recorded phone calls.

1.1.1 Features

CallCatcher.Personal offers many advanced features combined with an intuitive user interface. Some of the outstanding features are:

- Capacity from 1 up to 4 ports in a single PC / notebook.
- Analog Extension, Analog CO Line, Digital Extension and Basic Rate ISDN (S_o bus) versions.
- Superior voicerecording quality at 64kb/s and 36kb/s.
- Integrated phonebook to provide detailed caller information.
- Advanced user and security management.
- Ultra secure encrypted recordings.
- Extensive searching capabilities.
- Extra text like remarks or notes can be added to every recording.
- Optional live monitoring and playback (CallPlayer) over the LAN.
- Integrated scheduled backup facilities. Export facility for **.wav** files.
- **CallPlayer** remote client supports **.wav** and **.MP3** Drag & Drop for integration with for example Outlook.

1.1.2 Minimum System requirements

- Win-2000, Win-XP, Win-2003 or Windows Vista.
- Pentium-3 based PC / notebook with a minimum of 512 MByte RAM and 500MHz+ CPU. This figure is based on a maximum of 100.000 recordings in the database.
- The amount of internal RAM memory must be sufficient to handle a large amount of recordings. For each additional 100.000 recordings expected, it is recommended to add a minimum of 128 MByte RAM to the total internal RAM count.
- LAN network interface card. TCP/IP network protocol installed.
- High speed USB 1.1 or 2.0 interface (USB versions only).
- 5 Volts compatible standard PCI slot(s) (PCI versions only).
- Windows compatible sound card.

1.1.3 Recommendations

- A backup facility like a DVD writer to make periodical backups of the recordings made earlier using the build-in backup facilities. Backup drives or LAN backup directories should be mapped as logical drives that can be accessed by the CallCatcher.Personal server.

2. INSTALLATION

2.1 PREPARATION

Before powering up the system, always check whether the proper mains voltage is set. It should be installed in a safe and preferably air-conditioned server/PBX room or in an office environment. Like standard systems, you need to connect the display, keyboard, mouse, network and all other necessary peripherals first before starting up the system.

Your systems administrator is responsible for managing the user settings and network access rights to every user on the connected LAN. This should be done on network, system and application level before usage.

2.2 WINDOWS USAGE AND SETTINGS

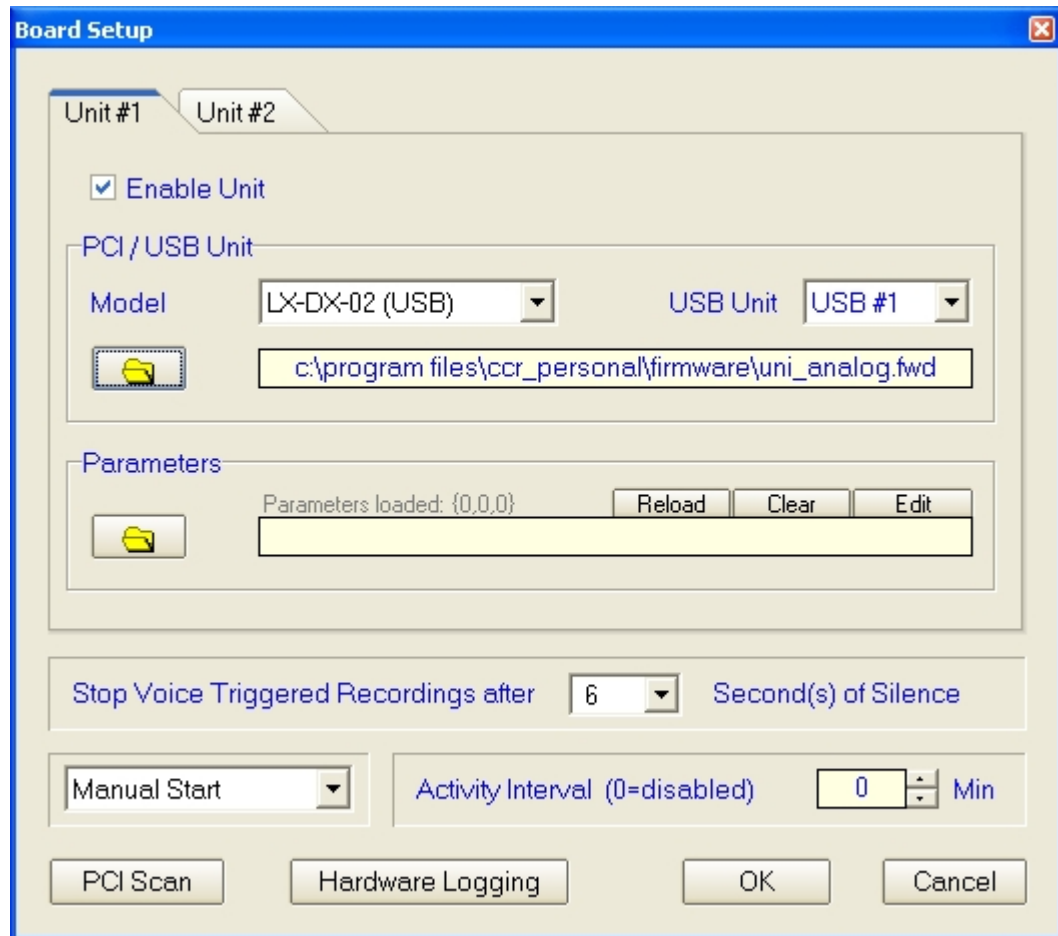
Although the [CallCatcher.Personal](#) system uses its system resources efficiently, the use of other third party software that is CPU, harddisk, network or Operating System intensive might affect its performance and behaviour. Most of the default Windows settings after installation of the CallCatcher.Personal and Windows Operating System will be sufficient for normal usage. In case network functionality is required please consult your systems administrator to configure the system properly on the Windows Operating System level.

Do not run a virus scanner while the CallCatcher.Personal system is recording as it can affect harddisk performance as well as causing unpredictable behaviour.

As a safety precaution also make sure that file sharing is NOT enabled for any directory on your CallCatcher.Personal server.

3. BOARD SETUP

Up to two Analog / Digital-Extension / ISDN-2 Voicerecording PCI board(s) or USB unit(s) can be installed within a single [CallCatcher.Personal](#) configuration.

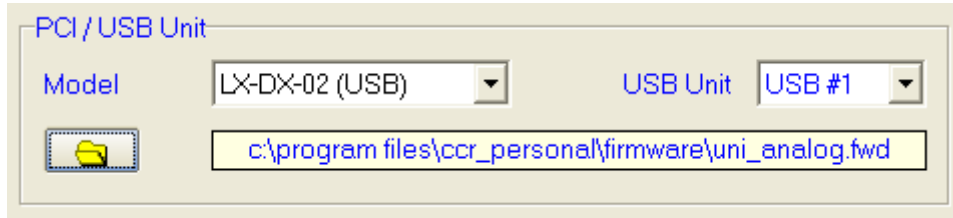


In the Board Setup window, each tab selection **#1** and **#2** has the following properties for each of the two:

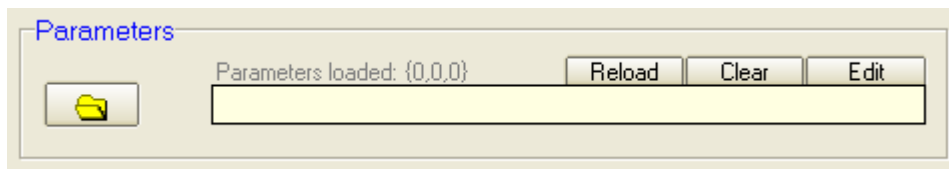
'**Enable Unit**' checkbox, this has to be checked to activate the selected board. The '**Model**' dropdown listbox specifies which type of Voice Recording board or USB box is to be used.

PCI boards must be installed by doing a PCI Scan first. This will auto detect OptiLogix PCI cards. A list of available cards will be displayed of which the appropriate one can be selected.

The detected hardware bus and slot number of the PCI card will be displayed in the '**PCI Bus/Slot**' pop-up box.



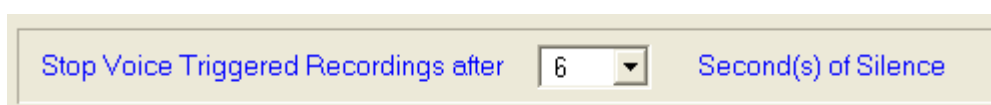
In the above '**PCI/USB Unit**' panel, the yellow browse button selects the downloadable firmware file for the board, which is to be downloaded during the start-up phase of the CallCatcher.Personal. A firmware file must be selected. Consult the latest release notes and use the most recent software and firmware versions to achieve a successful installation or update of the product.



In the above '**Parameters**' panel, the yellow browse button selects which optional parameter file is to be used in conjunction with the specified board. The **Edit** button will open a parameter editor panel for advanced hardware related settings and will create a parameter file automatically. Using the **Reload** button a parameter file can be loaded during run-time. The **Clear** button will clear the parameter file path.

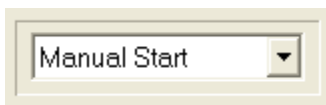
3.1 SPEECH ACTIVATED RECORDINGS

Configurations using analog speech and silence detection for starting and ending a voicerecording (VOX triggering) should configure the Silence detection dropdown listbox to configure the preferred silence timeout period. (Not required for digital configurations !)



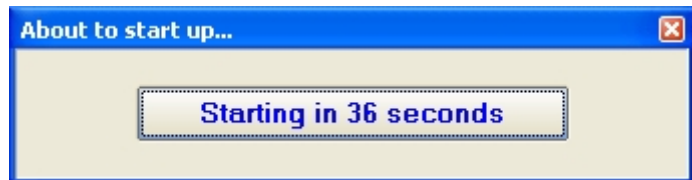
Selecting a value too low can result in the creation of multiple recordings for a single phone conversation. This is because a new recording will be started when silence is detected which exceeds the selected timeout period. A value too high could result in multiple phone conversations to be concatenated within a single recording.

3.2 AUTO-STARTING THE SYSTEM




This dropdown box specifies if manual starting or automatic starting after **N** seconds is required.

During auto-starting of the system, the user always has the opportunity to cancel this by clicking on the countdown button.



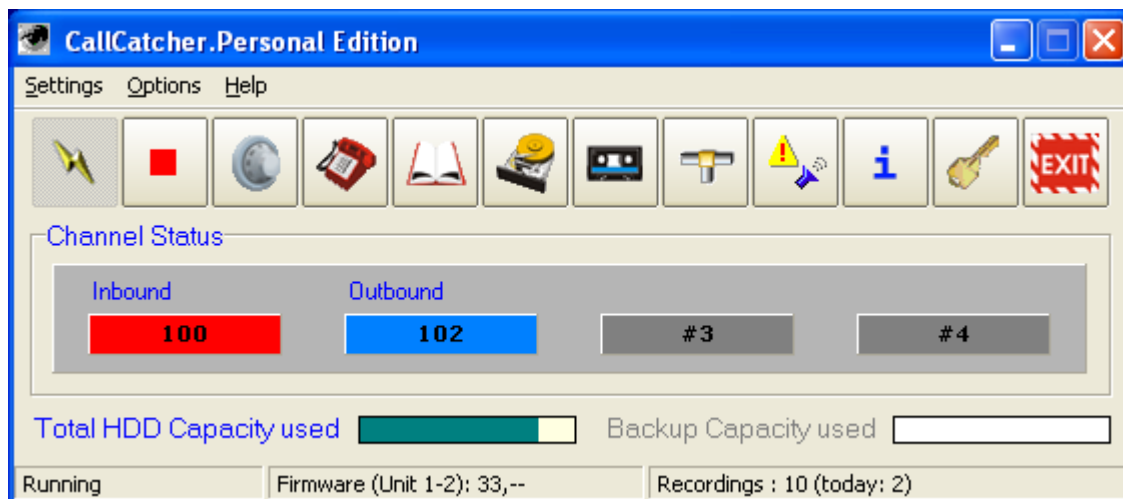
4. USING THE SYSTEM

After a successful installation you can start the program from the icon on your desktop, after which a tray icon will appear.  Double click this tray icon to get the 'Log On...' panel. When logged in for the first time, a warning will be issued that you are required to modify the user management settings. At this stage you have unrestricted access to the system. Refer to the 'User Management' chapter.

Note: The system uses **UTC** time (Universal Time Coordinated) to create date/time named directories for recording storage.








4.1 MAIN SCREEN

The main screen shows the status of all installed ports (channels). Non-available channels are greyed out.



4.1.1 Line Status Display

The main screen shows the systems activity status. Change of line status is shown as follows:

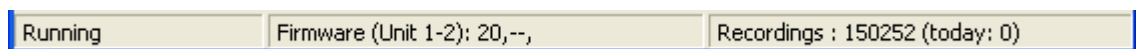
-  Idle state, no recording is made.
-  Idle state, no recording is made (Voice Activated mode).
-  Recording of an Outgoing call.
-  Recording of an Incoming call.
-  Recording of a Voice Activated call.
-  Channel not available.
-  Channel available but disabled.

Please note that a dark coloured status like dark Blue or dark Red shows that an outbound or inbound call is detected but that recording has not been started.

This either means that the detected call is not yet in a Connect state or it means for example that ports have been disabled or that the harddisk cannot be written to. Please check your [CallCatcher.Personal](#) configuration settings when all line state indicators remain dark coloured.

4.1.2 System Status Bar

The status bar shows the current status of the system.



When the system is started and the firmware is downloaded it will show the firmware release levels of each PCI board or USB box installed. Also the total amount of recordings available is shown.

4.1.3 CallCatcher.Personal Speed-Buttons



The [CallCatcher.Personal](#) is started using this button or it will start automatically when configured to do so (see **Board Setup**).



This button will enable authorized users to close the program. Unauthorized users will not be able to terminate the program.



The information button will display the systems application software release level as well as the name of the current user.



This will enable any user to logout while keeping the system running. It is then required to login again to get access to the system.



This button will make the "manual record" / "add notes" panel appear and will hide the main screen at the same time.



Set system port properties on a per port basis or set all ports at once.



Access to User and Security Management.



Phonebook Entry access button.



Harddisk Management and Backup settings.



Click here to search for and listen to recordings.



Status overview of remote Network Clients that are logged in to the CallCatcher.Personal server.



Alarm and Sound card settings.

4.1.4 Manual Record / Add Notes

A special feature is available for those users that employ the CallCatcher.Personal on their desk to control their own recordings manually or to add notes to recordings in progress.

When the Manual Record button is clicked on the main screen, the below small control panel will appear (X,Y position on the desktop is remembered). Please move this panel to a position on the right side of your screen.

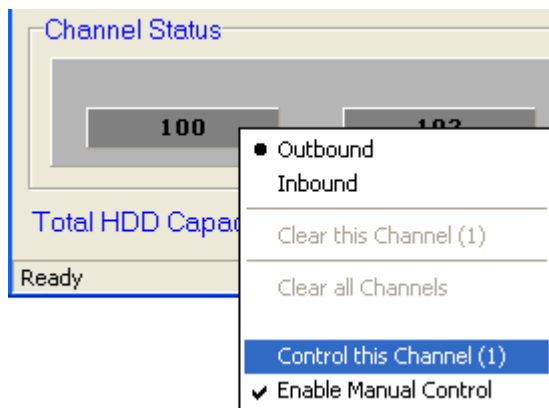


By clicking on the < button the panel will expand:

The checkbox when checked will make the background color red to indicate that a manual initiated recording (by clicking on the green button) will be started as an inbound call. Otherwise the recording will be started as an outbound call (blue background).

During recording the green button (yellow in case of voice activated recordings) will change color to indicate that recording is in progress. Clicking this button once more will stop the recording.

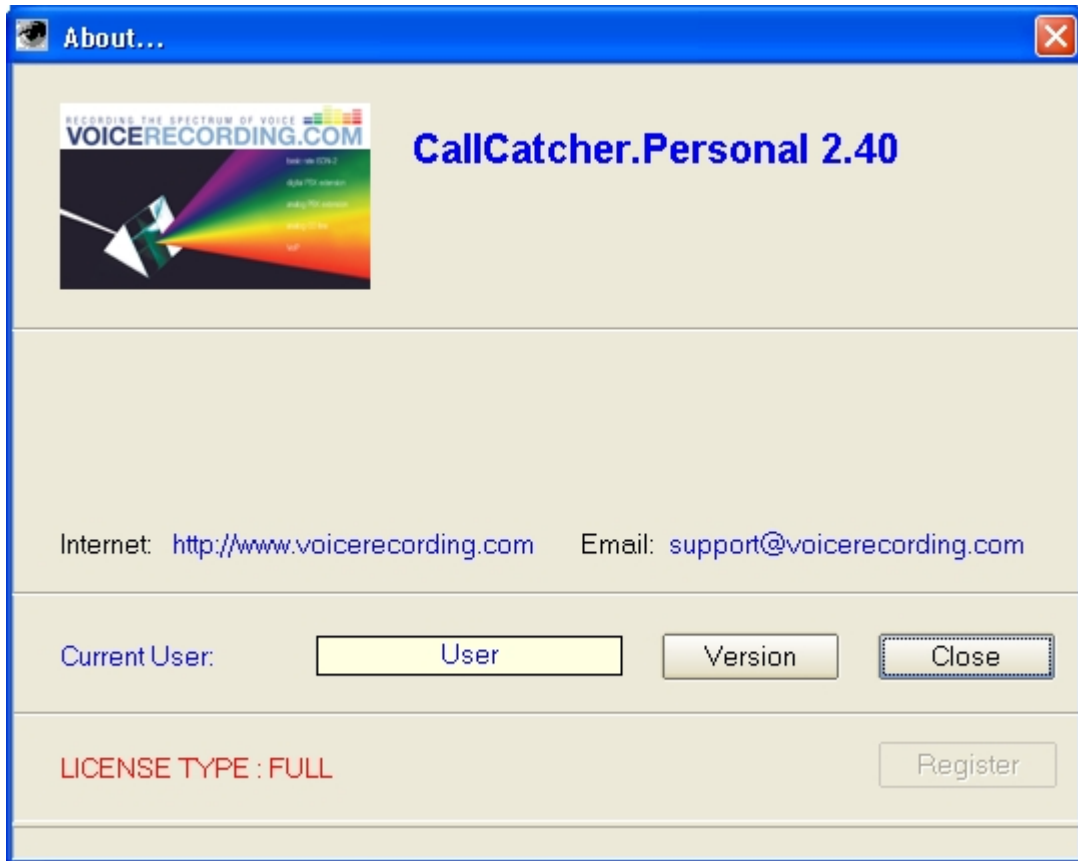
When this panel is expanded it is possible to add notes while the recording is in progress. These notes will be added to the **Remarks** field. Please note that adding notes is possible during recordings that are manually initiated and recordings that are made automatically. So it is available regardless of the fact if Manual Control is enabled.



Note: the channel that is controlled by this panel must be selected first by right clicking the appropriate status bar on the main screen. In case manual recording is required (recordings will then not be started/stopped automatically !) please enable it first by right clicking 'Enable Manual Control'.

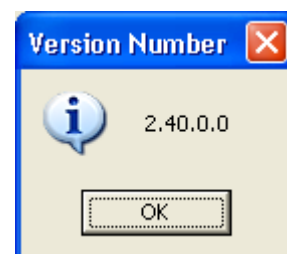
4.1.5 About panel

The '**About**' panel is programmable and can display dealer/distributor specific information.



Using the **Register** button, a time limited license or a full license key code can be entered. By default a 60 day license is active after installing the CallCatcher.Personal software.

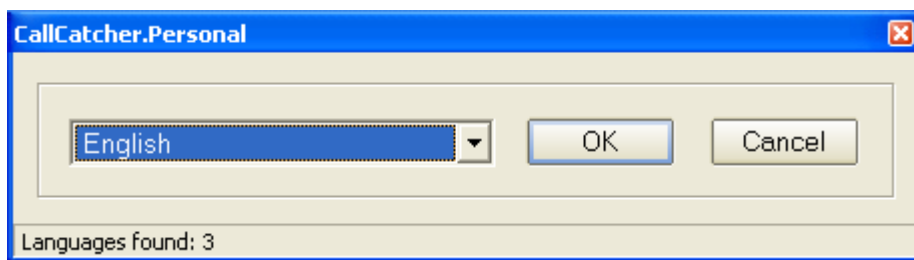
Click on **Version** for the full version number.



4.2 LANGUAGE SUPPORT

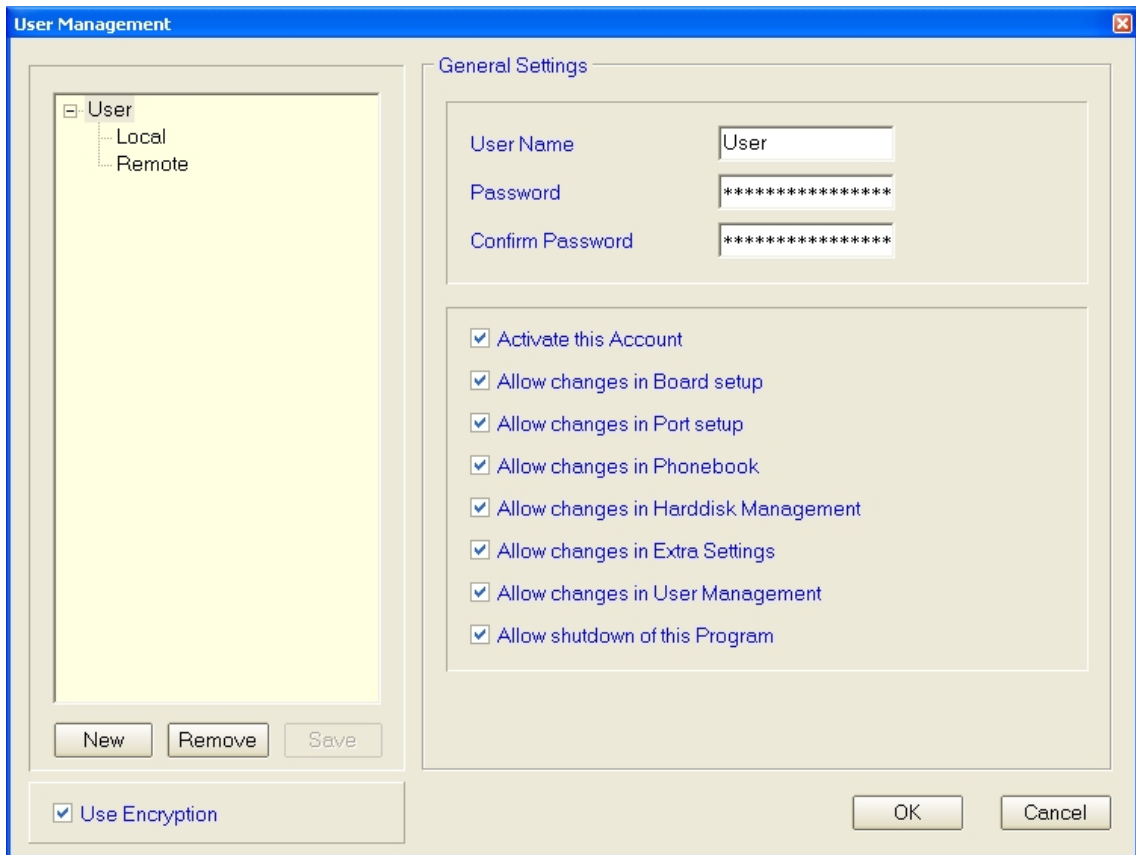
Support for multiple languages is available and can be selected in the panel shown below. This panel can be accessed through the main menu option: '**Settings**' / '**Available Languages**'

Languages can be created and added. See the **.Ing** files in the **\Program Files\CCR_Personal** directory. Use an existing language, rename it (use a **.Ing** extension!) and modify it to suit your new language.



5. USER MANAGEMENT

An unlimited amount of users, each with their associated access rights, can be created here.



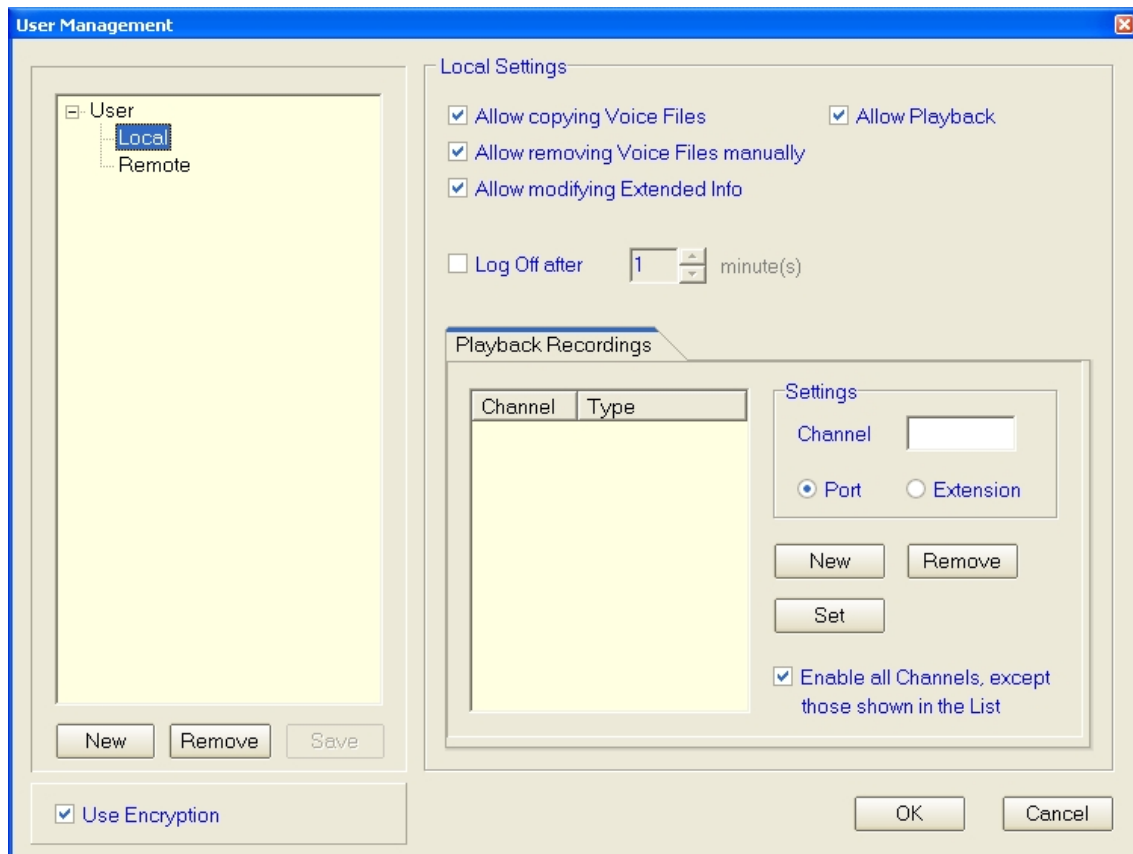
Using the **New** and **Remove** buttons, users can be created or removed. When the focus is on the User Name in the tree list, the right side of the view will show the global settings for editing. Click the **Save** button to confirm the changes made.

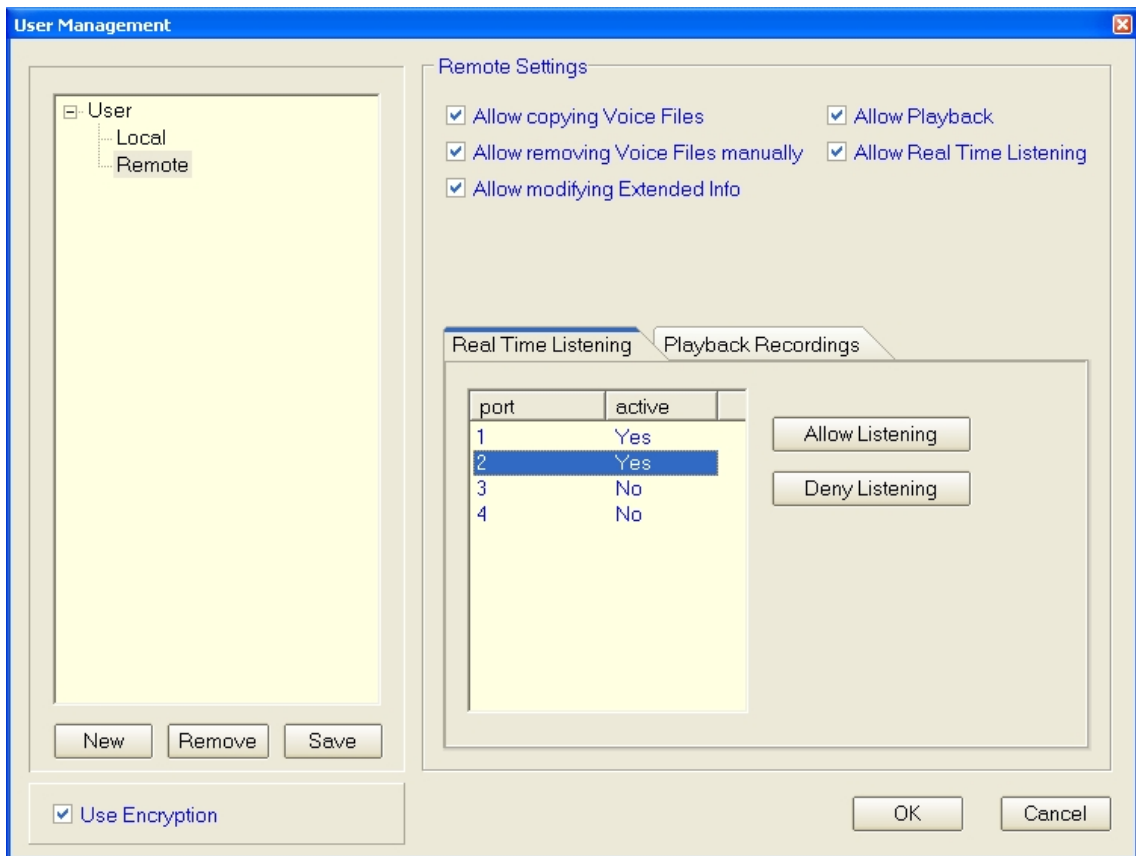
Note: make sure the machine is connected to the local LAN to allow CallCatcher.Personal remote client software login.

5.1 LOCAL AND REMOTE SETTINGS

The 'Local' settings and the 'Remote' settings can be accessed by putting focus on these nodes in the tree list.

These settings, which are further grouped using tabs, have various checkboxes and lists available to change individual access rights. The names of these checkboxes are sufficiently explanatory and present the access rights to various parts of the [CallCatcher.Personal](#) environment. In addition to this, a list of ports and / or extensions can be specified which should be included or excluded from having access to by a specific user.



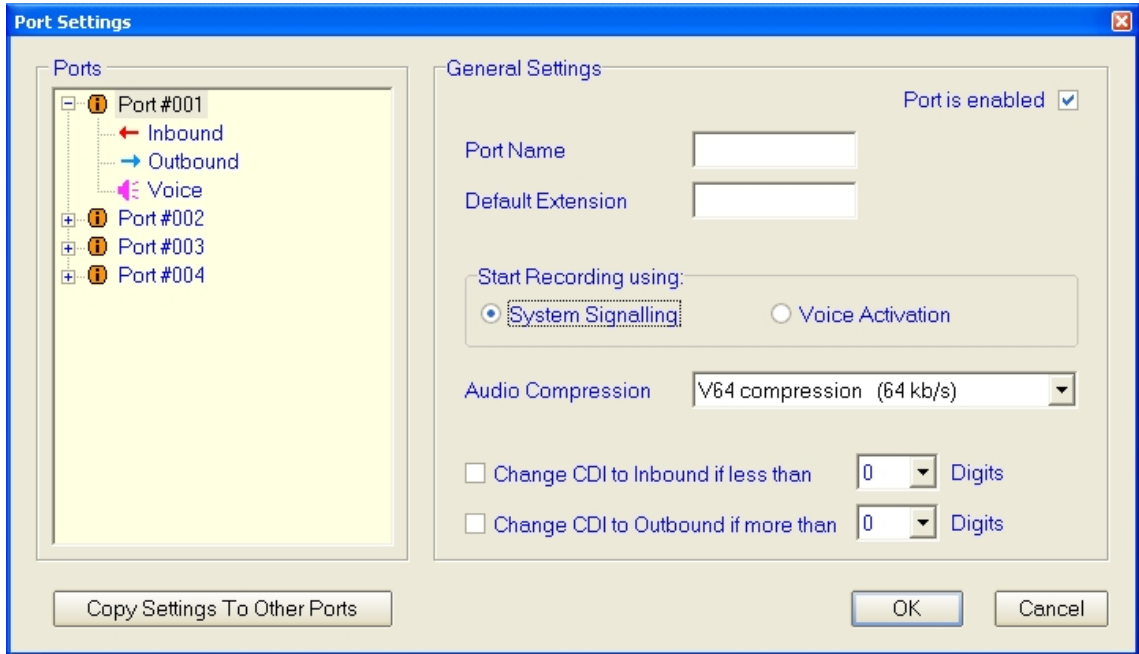


Entering a '**Channel**' number and selecting the type ('**Port**' or '**Extension**') followed by clicking on the **New** button will program the setting. The **Clear** button will remove the focused entry in the list and will clear the editbox. The **Set** button allows for updating a list entry without creating a new one.

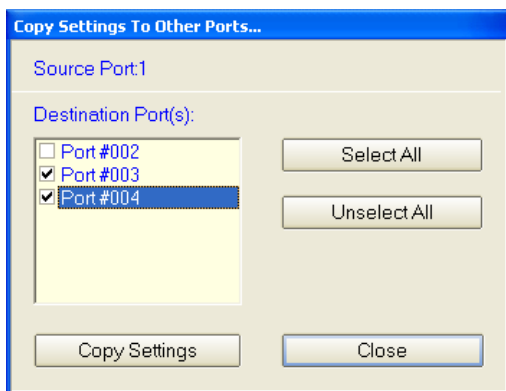
5.1.1 Encryption

When the '**Use Encryption**' checkbox is checked, the [CallCatcher.Personal](#) will use a default encryption key to store recordings on disk. When unchecked, the files will not be encrypted and will be readable by most commercially available audio player programs.

6. PROPERTIES PORT



Depending on how the [CallCatcher.Personal](#) is interfaced to the corporate telephone infrastructure, each port will either represent a CO line, a PABX extension or a mix of both.



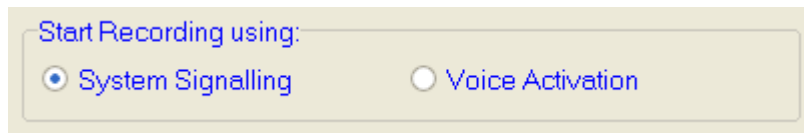
A specific port setting can be copied to all or a selection of other ports by focussing on the port to be copied first and then clicking on the **Copy Settings To Other Ports** button which will make this panel appear.

6.1 GENERAL SETTINGS

6.1.1 Audio Compression

The 'Audio Compression' property allows to select a proprietary 36 kbit/s compression mode that gives almost the same high 64 kbit/s quality at about half the file size.

6.1.2 Connection to CO (External) Lines



In most situations the interface that is connected to CO lines will have

support for analog line signalling or Digital ISDN-2 / ISDN-30 type of signalling. The 'System Signalling' radio button is then to be selected.

Always check the firmware release notes to see which firmware requires 'System Signalling' or 'Voice Activation'. This setting must be set before starting the system.



6.1.3 Connection to Extensions

Ports can be connected to internal extensions as well. Some important considerations are to be taken into account:

- A [CallCatcher.Personal](#) port is connected to the telephone handset just like it is connected to an analog CO line. The handset should be of an analog type in which case there are two possibilities:
 - The telephone handset is a standard POTS device with support for a high voltage ringing signal, in which case the line-current activation option is to be selected and where a differentiation can be made between incoming- and outgoing calls.

- The telephone handset is a non standard device (usually 4 wire) which receives ringing as an audio signal, in which case line-current activation can be an option, but where there is no differentiation possible between incoming and outgoing calls.
- A [CallCatcher.Personal](#) port is connected to a proprietary PBX specific digital telephone handset. Digital Extension interfaces are required for this.

'System Signalling' must be selected for Digital Extension firmware that supports CLI/DDI (D-channel protocol). **'Voice Activation'** must be selected for firmware that does not support CLI/DDI.

- A [CallCatcher.Personal](#) port is connected to the speaker wire pair of a digital handset, in which case it is effectively connected to a combined analog audio source of this handset. A small T-split adapter will be required and the **'Voice Activation'** radio button should be selected. In this situation it is not possible to differentiate between incoming and outgoing calls. Analog port interfaces are required in this case.

6.1.4 Port Name

A **Port Name** can be specified which will be displayed on the main status screen as a static text. The '**Default Extension**' will appear in the '**Extension**' column of the recordings list in the '**Monitor**' screen.

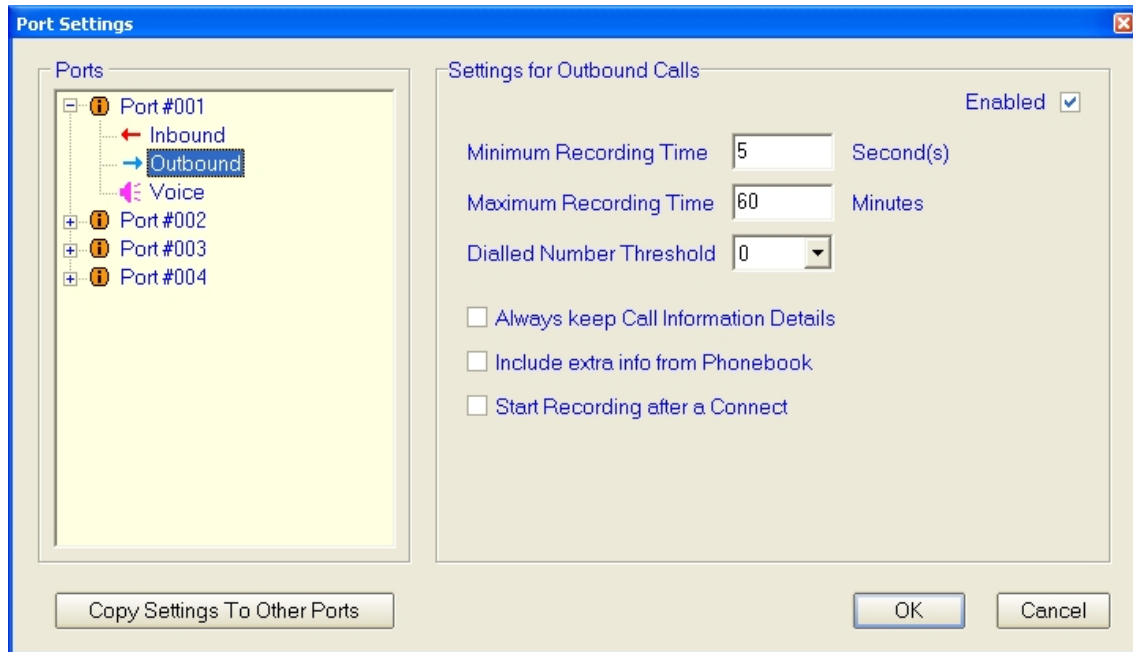
6.1.5 Change CDI to Inbound....

The Call Direction Indicator (CDI) can be changed automatically to inbound afterwards, when the number of dialled digits is less than specified in the dropdown box.

6.1.6 Change CDI to Outbound....

The Call Direction Indicator (CDI) can be changed automatically to outbound afterwards, when the number of dialled digits is more than specified in the dropdown box.

6.2 OUTBOUND SETTINGS



6.2.1 Min / Max Recording Time

When enabled, it is possible to enter the '**Minimum Recording Time**' duration in seconds for which a call must have lasted before the recording is actually saved. Please note that the recording itself is started immediately and not delayed. The '**Maximum Recording Time**' limit in minutes will put a maximum limit to the recording time. If a negative value is entered like **-60** it will record forever but will create segmented recordings with a length of 60 minutes each.

6.2.2 Dialled Number Threshold

Dialled Number Threshold For outgoing calls the minimum number of digits to be dialled, before a recording is saved, can be selected as well. Therefore, when the digit threshold is not reached (the dialled number has not enough digits) the recording which has started will be rejected afterwards.

6.2.3 *Keep Call Information Details*

[Always keep Call Information Details](#) When checked, incomplete calls like Busy, No Answer, wrong/incomplete Dialed Number and recordings that are too short (voice file not being created), will get a 'header only' file that contains Call Information Details only and no voicerecording.

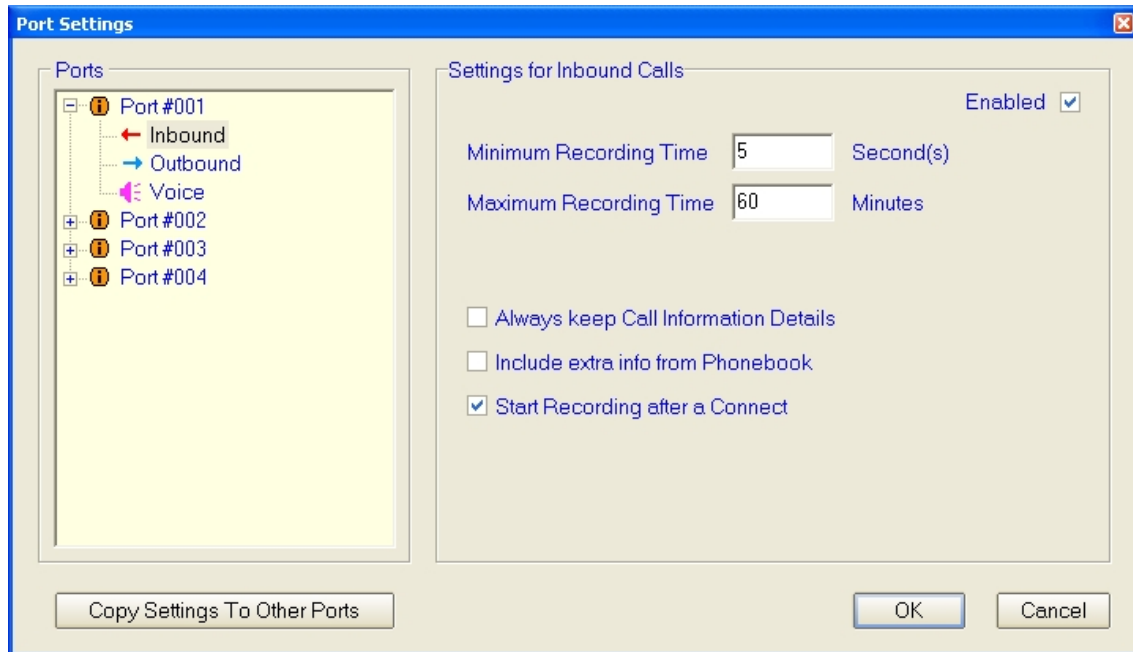
6.2.4 *Phonebook Data inclusion*

[Include extra info from Phonebook](#) This checkbox will attach data from the Phonebook to the voicerecording file. This data can contain descriptive information in relation to the dialled telephone number (DDI) or the received Caller-Line-Identification (CLI) number.

6.2.5 *Start Recording after a Connect*

[Start Recording after a Connect](#) When checked, a recording will be started only after the far-end has answered the call. Please note that not all PBX types of Digital Extension firmware will support this feature.

6.3 INBOUND SETTINGS



6.3.1 Min / Max Recording Time

When enabled, it is possible to enter the '**Minimum Recording Time**' duration in seconds for which a call must have lasted before the recording is actually saved. Please note that the recording itself is started immediately and not delayed. The '**Maximum Recording Time**' limit in minutes will put a maximum limit to the recording time. If a negative value is entered like **-60** it will record forever but will create segmented recordings with a length of 60 minutes each.

6.3.2 Keep Call Information Details

Always keep Call Information Details

When checked, incomplete calls like Busy, No Answer, wrong/incomplete Dialed Number and recordings that are too short (voice file not being created), will get a 'header only' file that contains Call Information Details only and no voicerecording.

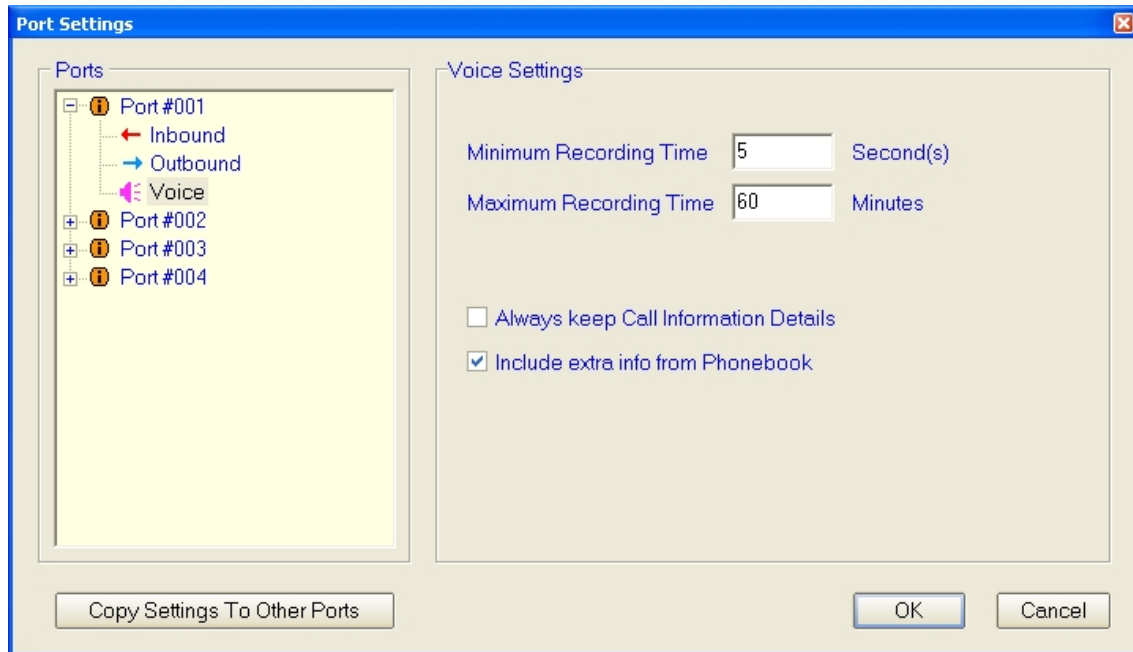
6.3.3 *Phonebook Data inclusion*

Include extra info from Phonebook This checkbox will attach data from the Phonebook to the voicerecording file. This data can contain descriptive information in relation to the dialled telephone number (DDI) or the received Caller-Line-Identification (CLI) number.

6.3.4 *Start Recording after a Connect*

Start Recording after a Connect When checked, a recording will be started only after the incoming call has been answered. Please note that not all PBX types of Digital Extension firmware will support this feature.

6.4 VOICE SETTINGS



6.4.1 Min / Max Recording Time

When enabled, it is possible to enter the '**Minimum Recording Time**' duration in seconds for which a call must have lasted before the recording is actually saved. Please note that the recording itself is started immediately and not delayed. The '**Maximum Recording Time**' limit in minutes will put a maximum limit to the recording time. If a negative value is entered like **-60** it will record forever but will create segmented recordings with a length of 60 minutes each.

6.4.2 Keep Call Information Details

Always keep Call Information Details

When checked, incomplete calls like Busy, No Answer, wrong/incomplete Dialed Number and recordings that are too short (voice file not being created), will get a 'header only' file that contains Call Information Details only and no voicerecording.

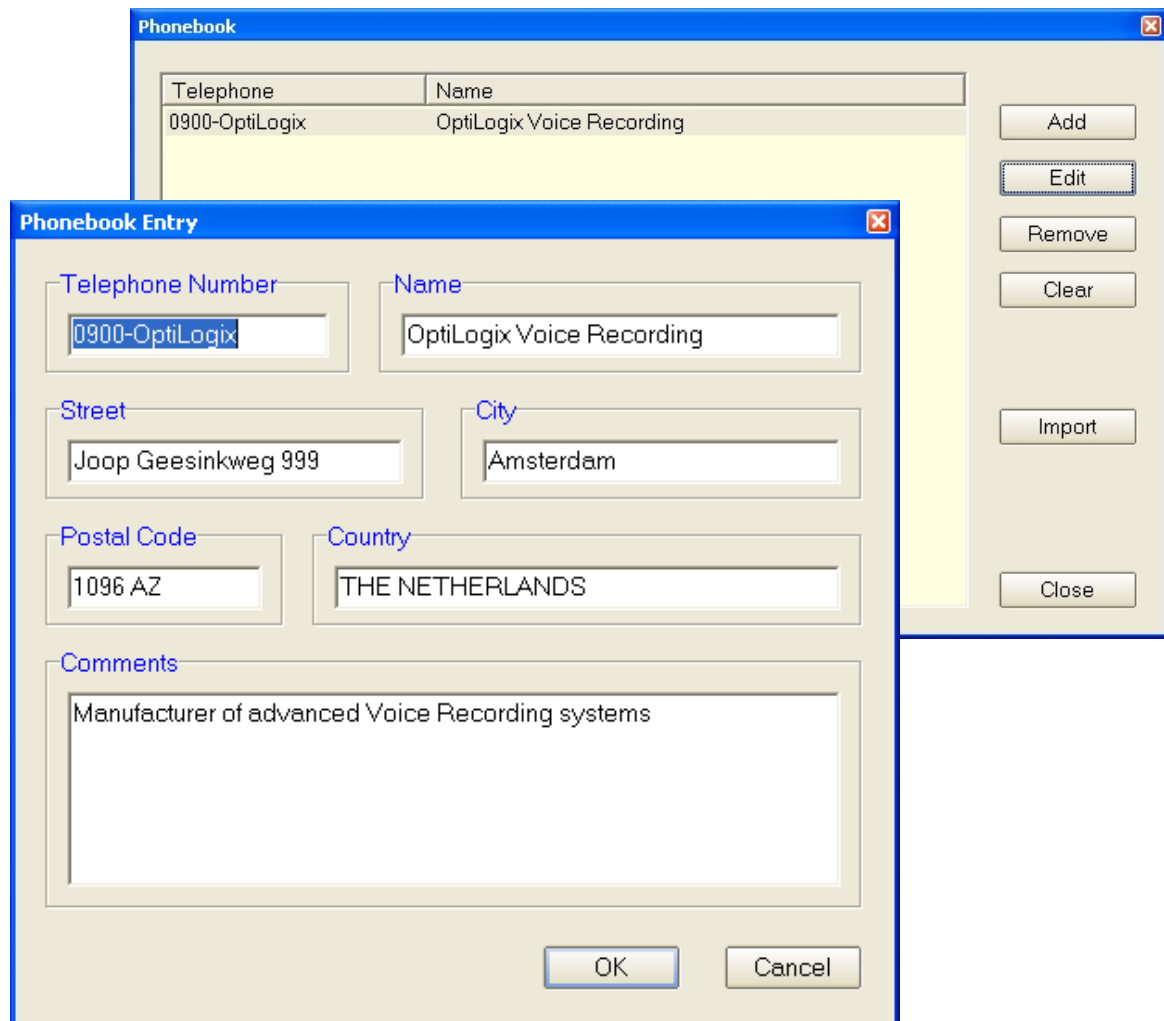
6.4.3 *Phonebook Data Inclusion*

[Include extra info from Phonebook](#)

This checkbox will attach data from the Phonebook to the voicerecording file. This data can contain descriptive information in relation to the dialled telephone number (DDI) or the received Caller-Line-Identification (CLI) number.

7. PHONEBOOK ENTRY

This view shows a list of all Phonebook entries available in the systems database. Adding, editing, removing as well as importing a CSV (Comma Separated Value) file are supported.



7.1 ENTERING PHONEBOOK DATA

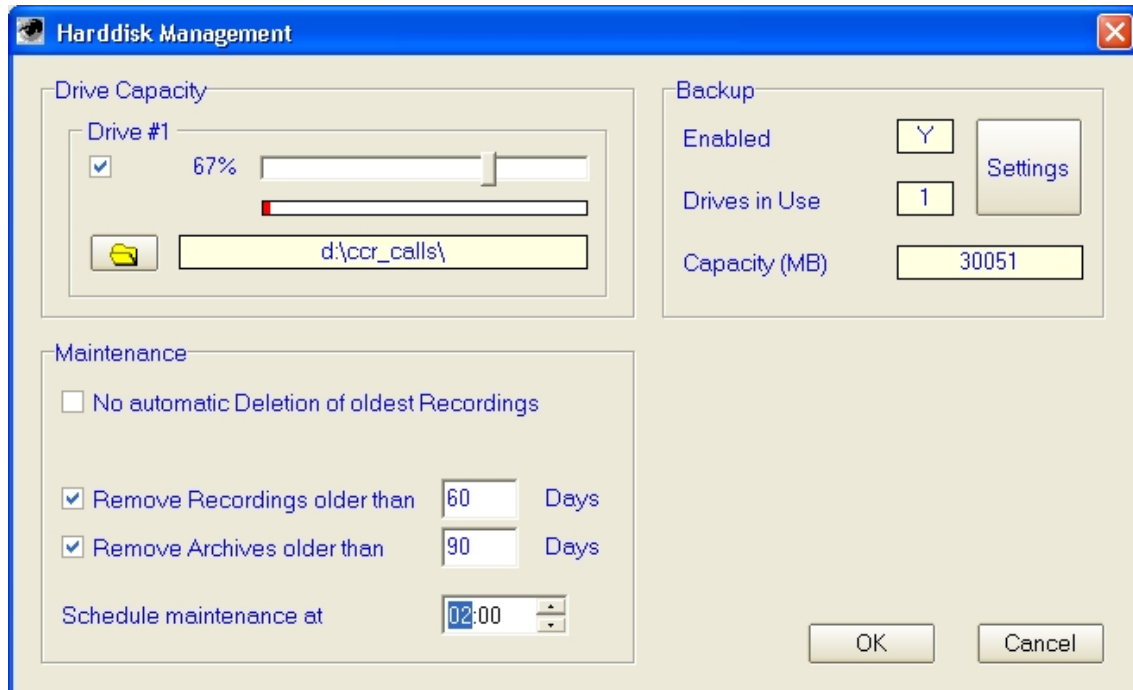
Telephone number, Name, Street, City, ZIP code, Country and Comments can be stored. This call specific information will be displayed in the '**Monitor**' screen when a recorded dialled number or Caller-ID number matches the '**Telephone Number**' field.

7.2 IMPORTING EXTERNAL DATA

An external data file with a list of Phonebook entries can be imported using the **Import** button. The format of the data file is in CSV format that has all seven data-fields separated by six commas as shown below:

TelNo,Name,Street,City,ZIPcode,Country,Comments

8. HARDDISK MANAGEMENT



The physical disk must be assigned a directory path in which the voicerecordings are stored.

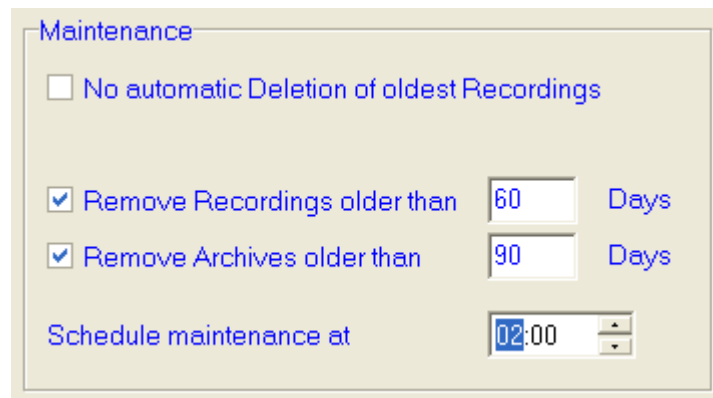
The current used disk space of the harddisk is shown by a red coloured bar-graph. Typically the manual slider must be set in such a way that it does not fall within the red area of the bar-graph.

For the harddisk the maximum allowable storage space (percentage of the disk size) and the directory path, in which every individual recording will be stored, must be specified. In case the harddisk reaches its maximum capacity then the oldest files will be erased automatically to create room for new recordings.

Before being erased completely (header + voice content) or only the voice content itself, the files can be automatically backed-up by the CallCatcher.Personal. The backup drive must be a logical drive and can physically reside on the local machine or on a machine on the Local Area Network (LAN).

8.1 REMOVE RECORDINGS AUTOMATICALLY

It is possible to have recordings older than a certain number of days to be removed automatically. When a recording is removed, its archive (header) is kept and the voice contents (the actual voicerecording) is deleted. Archives remain visible in the [CallCatcher.Personal](#) recording database and can be removed automatically as well after a number of days.



The checkbox '**No automatic Deletion of oldest Recordings**' when enabled will prevent old recordings from being removed when the storage capacity is exceeded. This means that new recordings will not be created (CallCatcher.Personal will stop writing recordings to disk).

Recordings older than **N** days can be automatically deleted. Only the voice content itself will be deleted, but the header (archive) will **NOT** be deleted and will stay visible in the list of recordings.

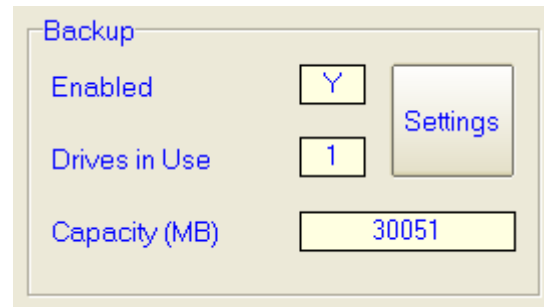
Archives (header without voice content) older than **X** days can be deleted as well. In this case the complete file will be removed from the system.

Warning: Files that are deleted cannot be recovered anymore !

The [CallCatcher.Personal](#) will do an automatic maintenance check on a daily basis during which the system is checked for missing files, empty directories and recordings/archives to be removed.

8.2 BACKUP

The creation of automatic backups is supported by [CallCatcher.Personal](#) and can be configured for various types of backup media, time schedules and multiple backup targets.

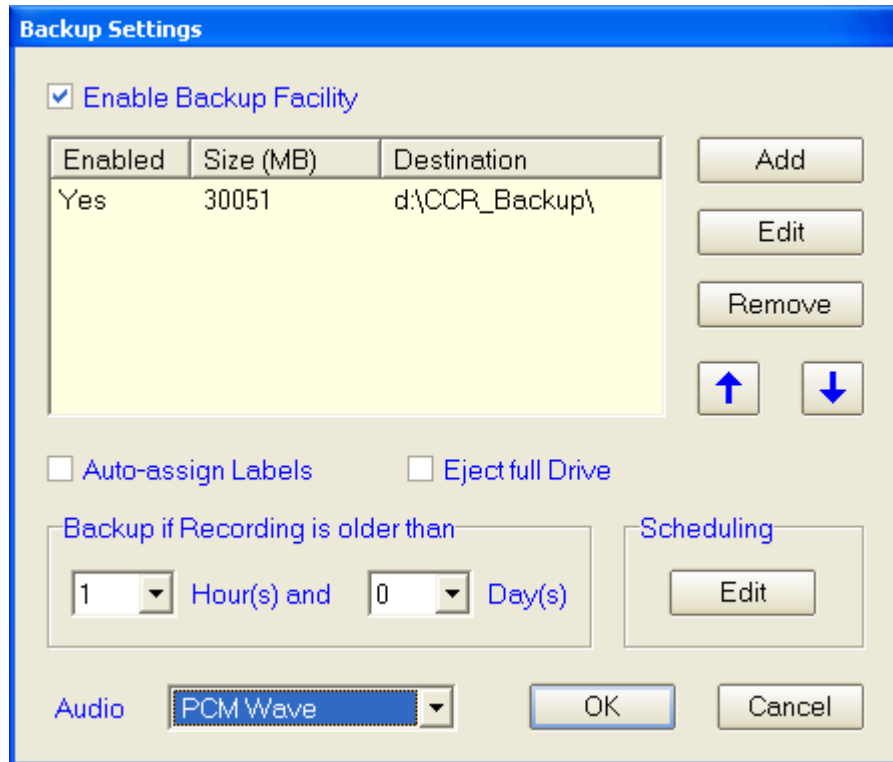


When a voicerecording file is being backed-up, it will be stored unaltered on the target drive (all backup media should be configured to be accessible as a logical drive). On the source drive the recording will be deleted and only the header (archive) will be preserved.

This modified header contains all original header data and some new data regarding the backup process that was applied to the original recording (date of backup and name of the backup medium). In this way archives will appear as true recordings to the system while having a fraction of the total storage size of the original recording. The name of the backup medium enables an easy way of finding the right backup tape. The [CallPlayer](#) client program can then be used on the tape for local audio playback and searching.

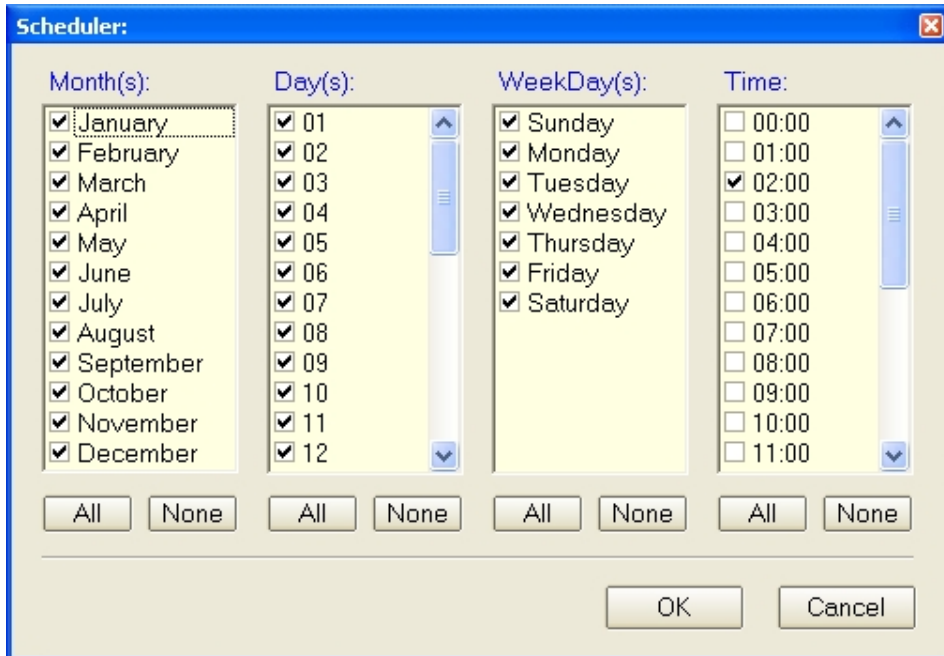
These archives (information headers without audio recording) can be deleted automatically by the [CallCatcher.Personal](#). In this case they will be removed from the [CallCatcher.Personal](#) recording database as well.

8.2.1 Backup Settings

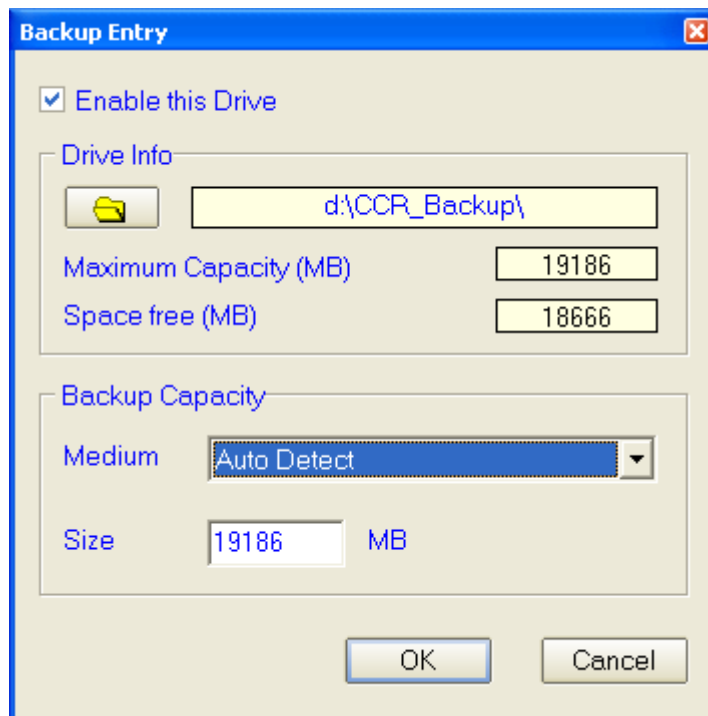


Multiple backup target drives can be configured. The sequence at which these are accessed can be programmed using the up and down arrow buttons.

The age of the recording at which is should be backed-up can be specified by day and hour. The moment at which backups are being made can be configured using a scheduling table as shown:

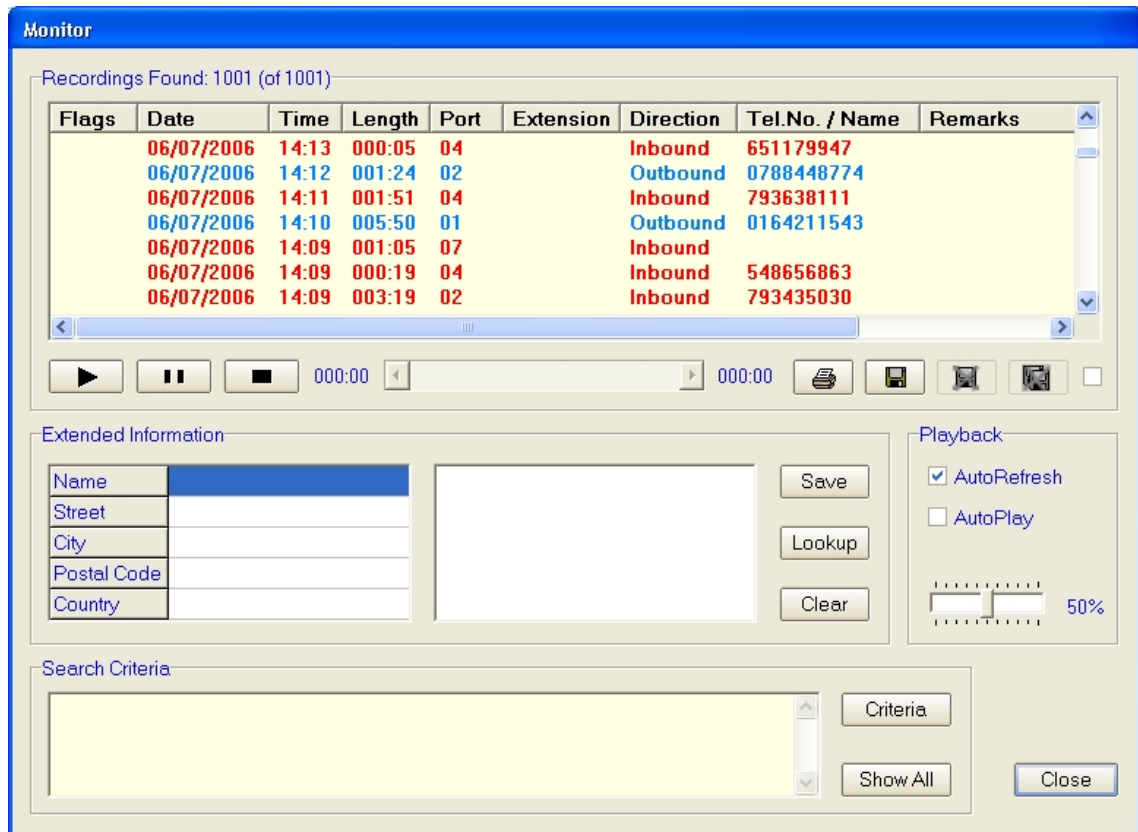


For each backup target drive, the maximum size can be specified. Some presets are available under the dropdown box 'Medium'.



9. MONITOR

The '**Monitor**' screen is used for searching and listening to recordings. Please note that it is only possible to playback recordings when the system is running.



The upper list shows all recordings available which have matched the search criteria. These criteria can be adapted in the '**Filter options**' screen, which is accessed by the **Criteria** button. The search criteria that can be applied are made visible in verbose form in the lower **Search Criteria** status window. The recordings that have matched the criteria can be sorted on every column item by clicking on the preferred columns heading.

By pressing the **Show All** button, all recordings available regardless of any search criteria will be displayed.

9.1 FLAGS

The **Flags** column in the recordings list can show the following attributes:

- **A** Recording is archived by the maintenance process (voice content is removed but header is preserved)
- **B** Recording is backed-up by the backup process. Recording and header are still available and unmodified.
- **V** Recording contains a reference to an associated screen capture (video) file.

9.2 EXTENDED INFORMATION

The '**Extended Information**' window will show information from the Phonebook if there is an accurate match available with the dialled (DDI) number or received CLI number. This information can be modified and remarks can be added to it. Click on **Save** to update/write this information into the header of the recording.

9.3 PLAYING VOICERECORDINGS

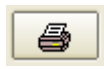



By using the Play, Pause and Stop buttons together with the slide bar, which shows the total duration of the recording as well, it is possible to scan for voice fragments within a recording very quickly.

If the '**AutoPlay**' checkbox is checked, then during scrolling of the recordings list, the recording that has received focus, will be played automatically. The volume slider bar will adjust the playback audio level between **0%** and **100%**.


Note: As soon as an item in the list of recordings is clicked, or when extended info is added / modified on a focussed item, the list will not be refreshed anymore with new recordings and the background color of the recordings list will change to indicate this. This in order to prevent the list from being updated while listening and looking for existing recordings. Clicking the '**AutoRefresh List**' checkbox, the list will return from its 'frozen' state.

9.4 EXPORTING AND ERASING RECORDINGS



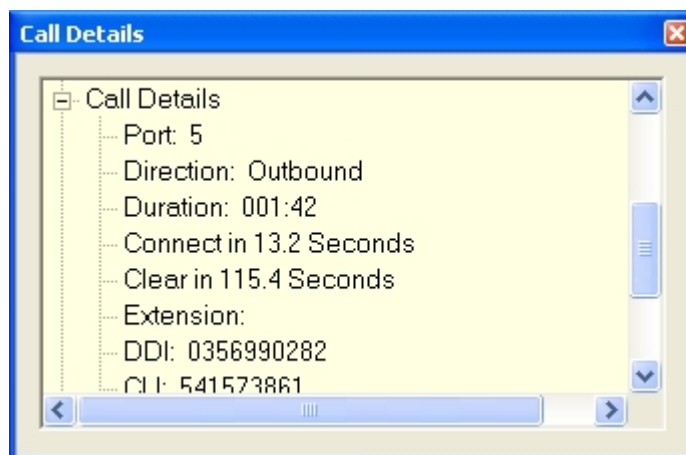
The list of recordings can be written to file for printing or archiving with the Save to File button. To the right of this button there is a button that will allow saving an audio recording in its native encrypted format (including header data)  or to export it in a standard unencrypted **.wav** audio format.



The single and multiple 'Erase' buttons are enabled  only when the safety checkbox to the right of these buttons is checked. When enabled, either a group of recordings (the recordings which have received focus) or all recordings that match the search criteria, are permanently erased. After the erasing operation the checkbox is cleared for safety reasons.

9.5 DETAILED FILE INFORMATION

By double clicking on a recording in the list, detailed information will be shown in the form of a tree-list with both generic and file specific information regarding the type of audio compression, file size etc...



9.6 FILTER OPTIONS

Filter options

Date and Time | Call Duration | Ports and Extensions | DDI and CLI | Extended Info

Specify Date

Begin | End

March, 2007

Sun	Mon	Tue	Wed	Thu	Fri	Sat
25	26	27	28	1	2	3
4	5	6	7	8	9	10
11	12	13	14	15	16	17
18	19	20	21	22	23	24
25	26	27	28	29	30	31
1	2	3	4	5	6	7

Single Day
 Period
 Last n Days

Specify Time

From: 14:00
Until: 15:30

Show results within period
 Show results outside period

From 3/19/2007 - 3/24/2007, From 2:00 PM - 3:30 PM

Reset | OK | Cancel

9.6.1 Date Criteria (Period)

The 'Date & Time' tab has a 'Specify Date' checkbox, which will include the date into the search criteria. The same is true for 'Specify Time', which will include the time selection into the search criteria.

The date criteria allows for selecting a 'Single Day' or a 'Period' or the 'Last n days'. The calendars allow an easy way of picking a day, month and year. By double clicking the text presenting the month, the month can be changed and by clicking on the year value, the year can then be changed using a spin-button.

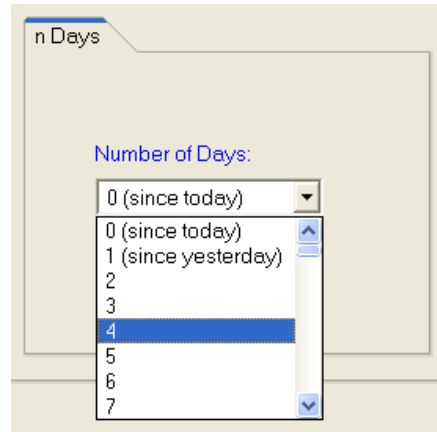
9.6.2 Time Criteria

From: 08:00
Until: 16:30

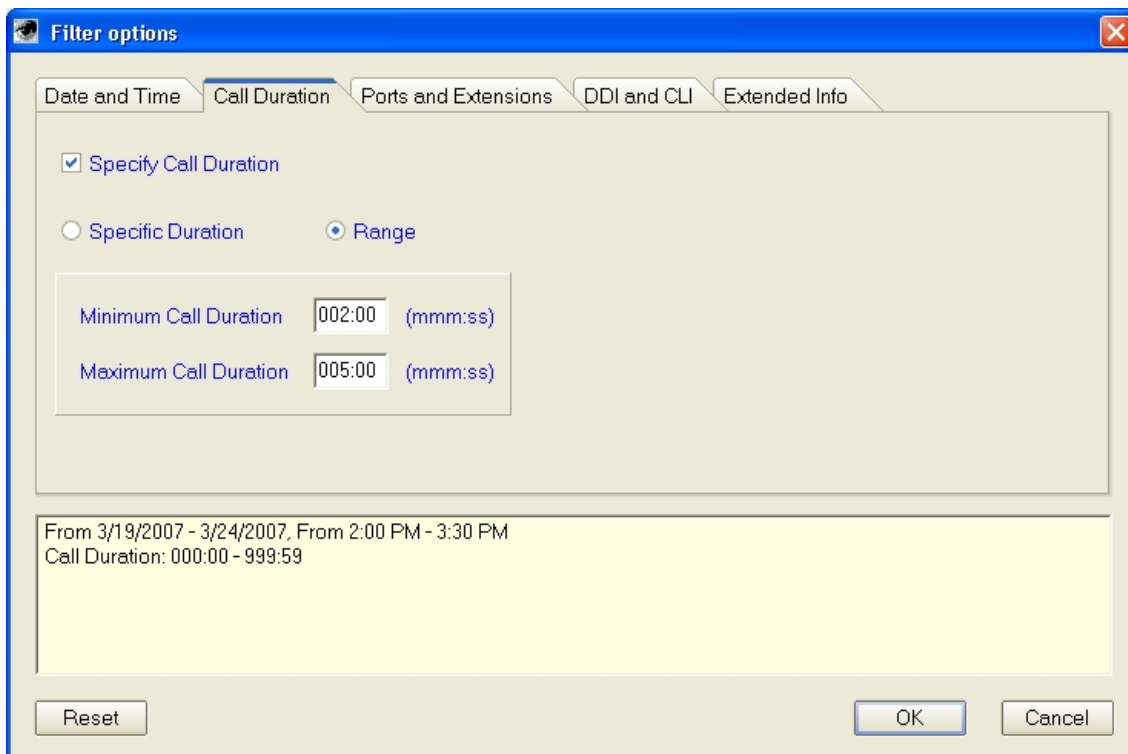
The time criteria allows for selecting a time period (in 15 minutes increments) within or outside the recordings should be found.

9.6.3 Date Criteria (Last n Days)

The 'Number of Days' selection allows for searching back to the last 90 days. If a longer period is required to search back for, please select the 'Period' radio button.

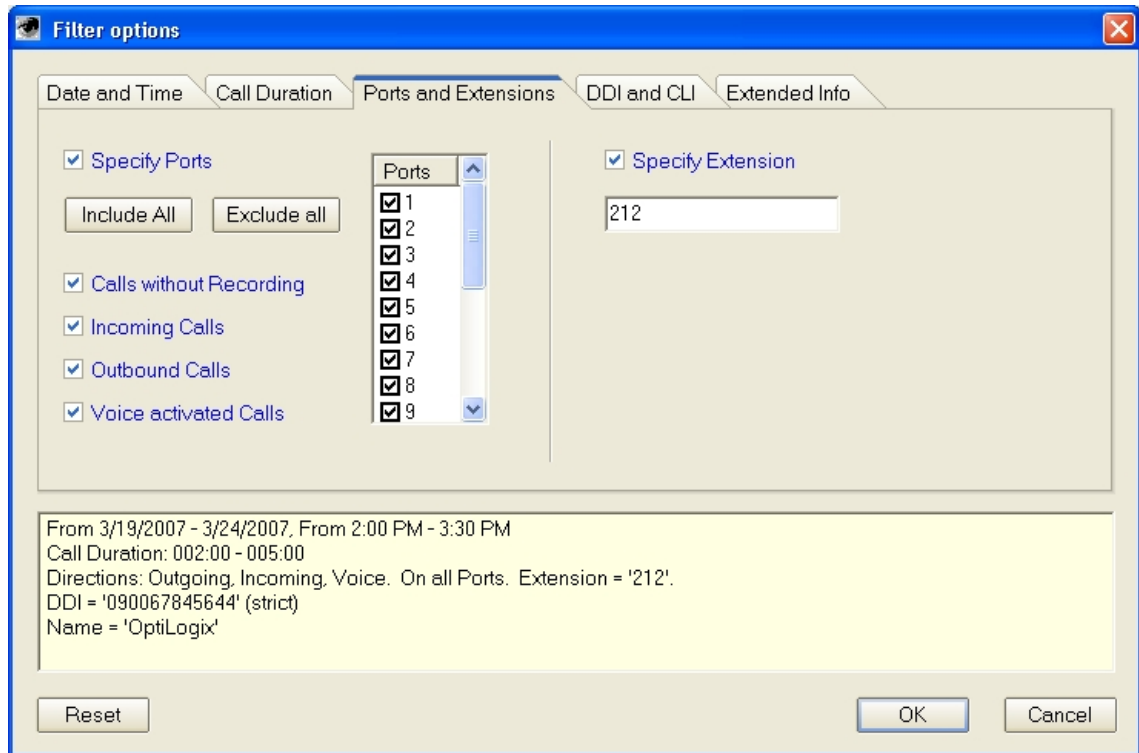


9.6.4 Call Duration Criteria



Recordings can be filtered on the basis of duration of the call. This can be done by specifying a single duration (with a 10 second margin) or by range.

9.6.5 Port Criteria



The Ports criteria allows for Including or Excluding certain ports (recording channels) and to search for incoming, outgoing or both types of calls. Criteria also can be set for Voice activated calls.

Extension numbers (in case of recording extensions directly) can be specified as well.

9.6.6 Dialed Number and Caller-ID Criteria

The screenshot shows a 'Filter options' dialog box with the 'DDI and CLI' tab selected. It contains two main sections: one for 'Specify dialed Number' and one for 'Specify Caller ID Number'. The 'Specify dialed Number' section has a text box containing '090067845644', a 'Sensitivity' dropdown set to 'Strict', and a 'Condition' dropdown set to 'OR'. The 'Specify Caller ID Number' section is currently empty. Below these sections is a preview window showing the filter criteria: 'From 3/19/2007 - 3/24/2007, From 2:00 PM - 3:30 PM', 'Call Duration: 002:00 - 005:00', 'DDI = '090067845644' (strict)', and 'Name = 'OptiLogix''. At the bottom are 'Reset', 'OK', and 'Cancel' buttons.

Dialed- or received Caller-ID telephone numbers can be searched on. The criteria are enabled when the **'Specify dialed Number'** and **'Specify Caller ID Number'** checkboxes are checked respectively. On both criteria there is a selection possible to choose either **'Strict'** or **'Relaxed'** search sensitivity.

Please note that the Caller-ID option is available on all ISDN firmware and Digital Extension firmware with D-channel signalling support (some PBX models only).

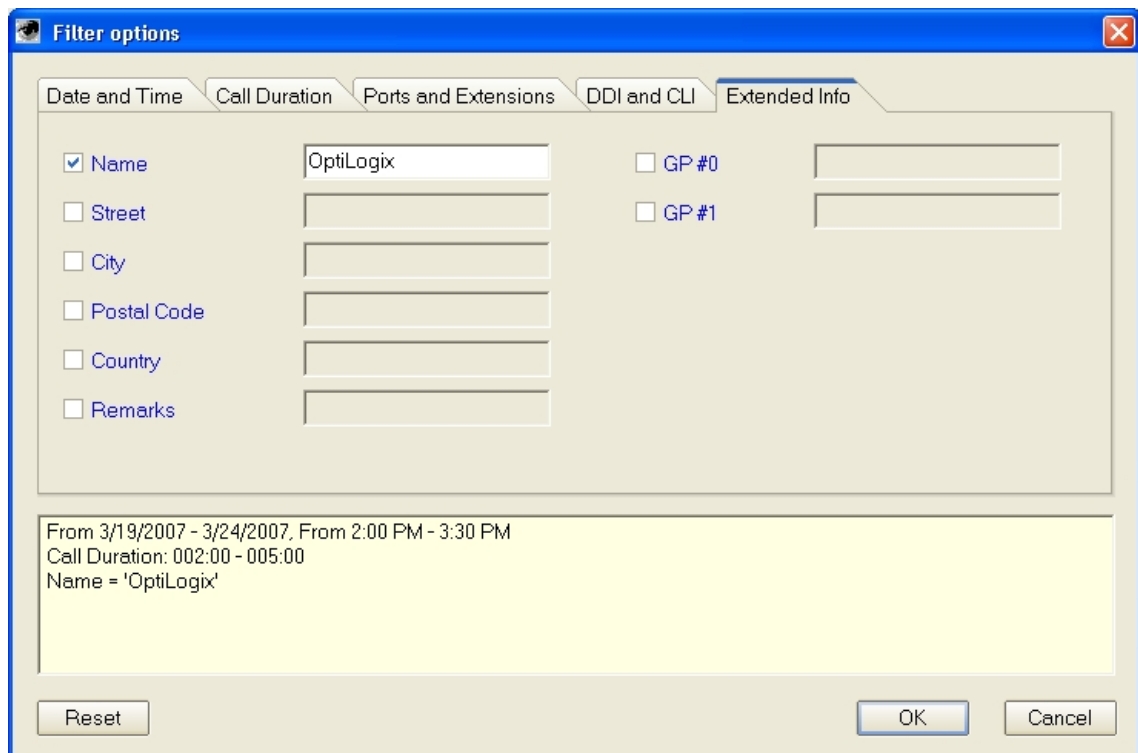
The strict sensitivity rules for the searching number(s) are:

- Match the recorded numbers fully or,
- The searching number must fully fit the first N digits of the recorded numbers.

The relaxed sensitivity will treat the searching number(s) as a subset. A match is found if the search number is found anywhere as a part of a recorded number.

The conditions '**OR**' and '**AND**' are used to select if one of the searching numbers must match (OR condition), or if both the numbers must match (AND condition).

9.6.7 Extended Info Criteria

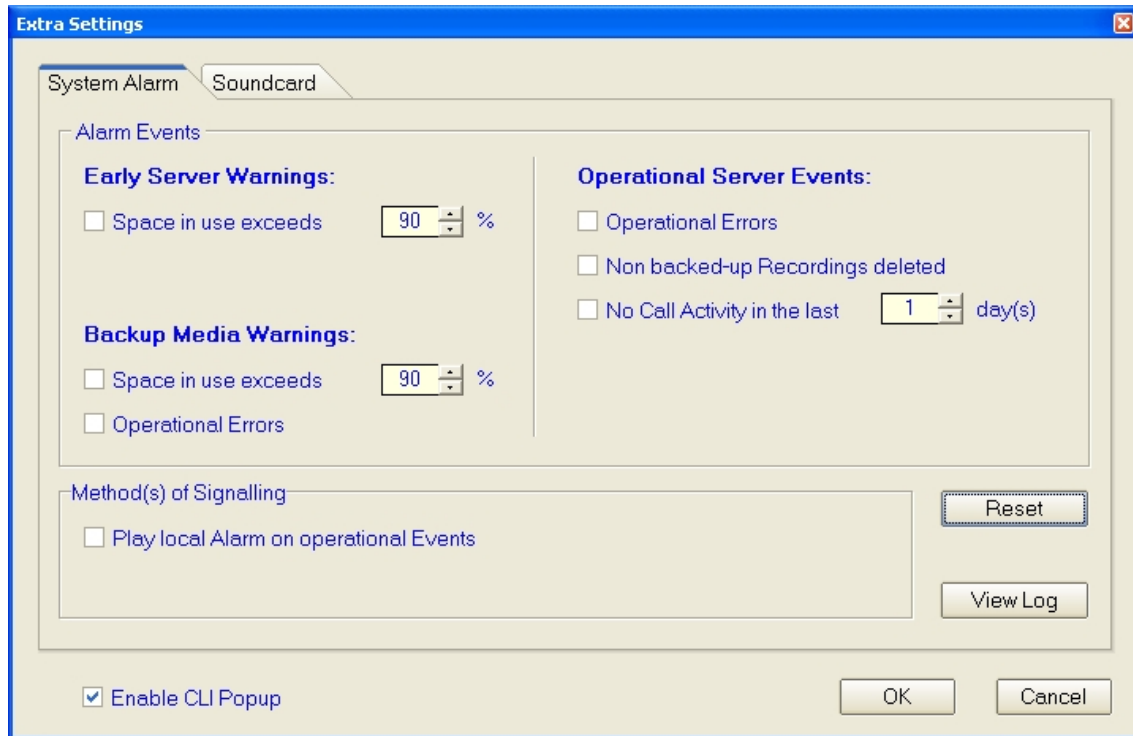


The screenshot shows a 'Filter options' dialog box with the 'Extended Info' tab selected. The dialog has a blue title bar and a close button in the top right corner. The main area contains several filter criteria, each with a checkbox and a text input field. The 'Name' checkbox is checked, and its input field contains 'OptiLogix'. Other criteria include 'Street', 'City', 'Postal Code', 'Country', and 'Remarks', all with unchecked checkboxes and empty input fields. To the right, there are two 'GP' (Global Positioning) criteria: 'GP #0' and 'GP #1', both with unchecked checkboxes and empty input fields. Below the filter criteria, there is a yellow text area containing the following text: 'From 3/19/2007 - 3/24/2007, From 2:00 PM - 3:30 PM', 'Call Duration: 002:00 - 005:00', and 'Name = 'OptiLogix''. At the bottom of the dialog, there are three buttons: 'Reset', 'OK', and 'Cancel'.

In this '**Extended Info**' tab, one or more Extended Information items can be specified here and used in the search criteria. Please note that searching is not case sensitive.

10. EXTRA SETTINGS

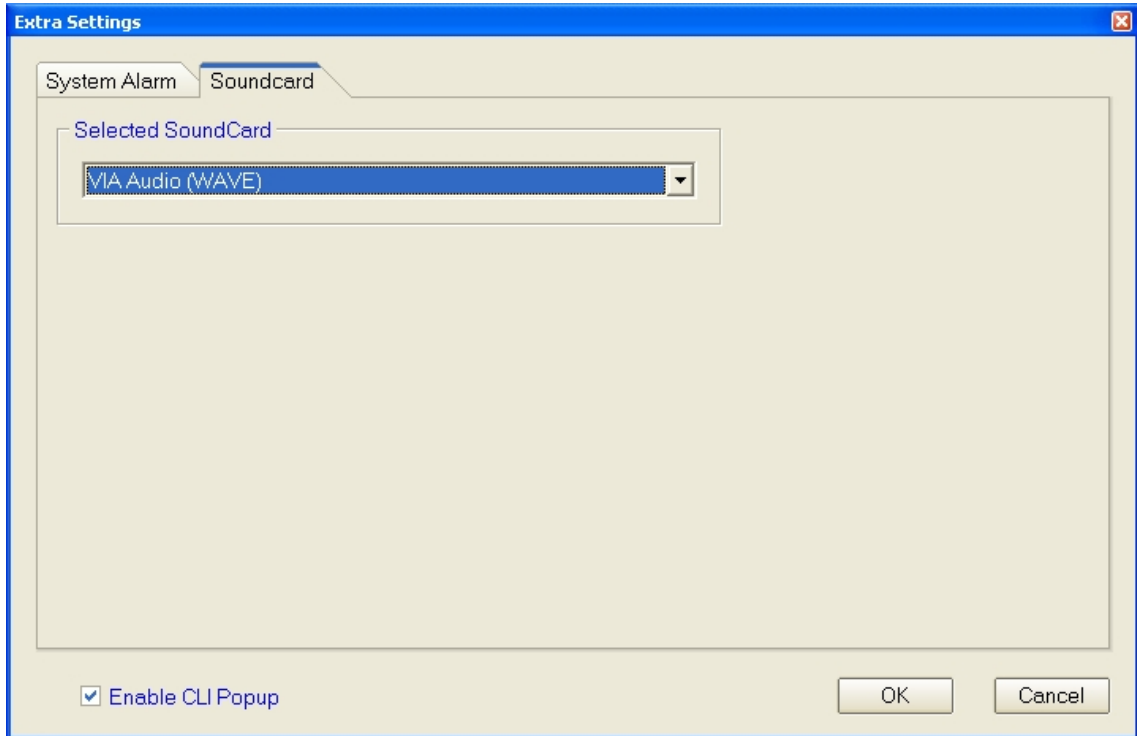
10.1 SYSTEM ALARM SETTINGS



Additional facilities are provided by the CallCatcher.Personal to support alarm warnings.

A local alarm can be generated when storage or backup capacity is exceeding pre-programmed limits. Operational errors or warnings are logged and can be viewed using the **View Log** button.

10.2 SOUND



Windows machines can have multiple sound resources, a specific sound resource must be selected in case the default resource does not operate with the [CallCatcher.Personal](#) server.

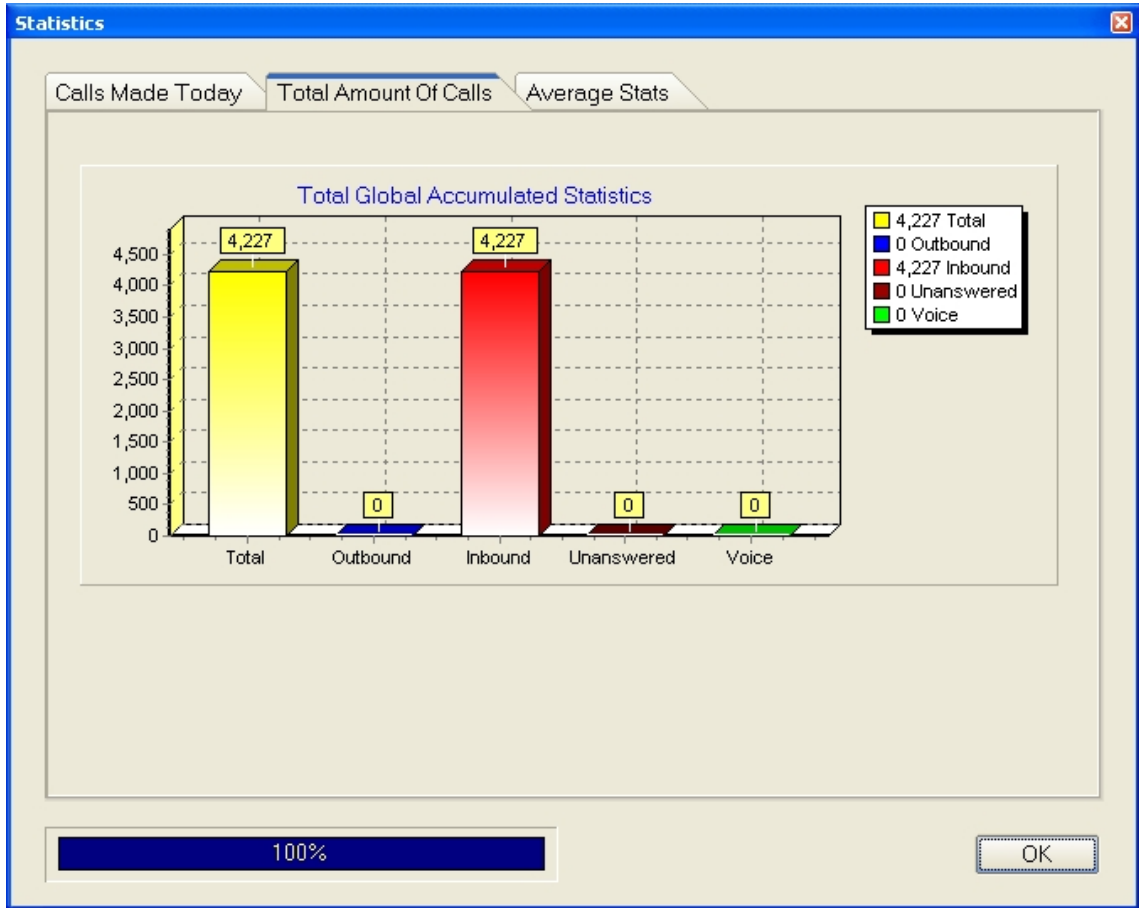
10.2.1 Enable CLI Popup

For analog telephone line applications the window CLI popup feature can be enabled that will show the CLI number and name (if programmed in the phonebook) upon an incoming Call.

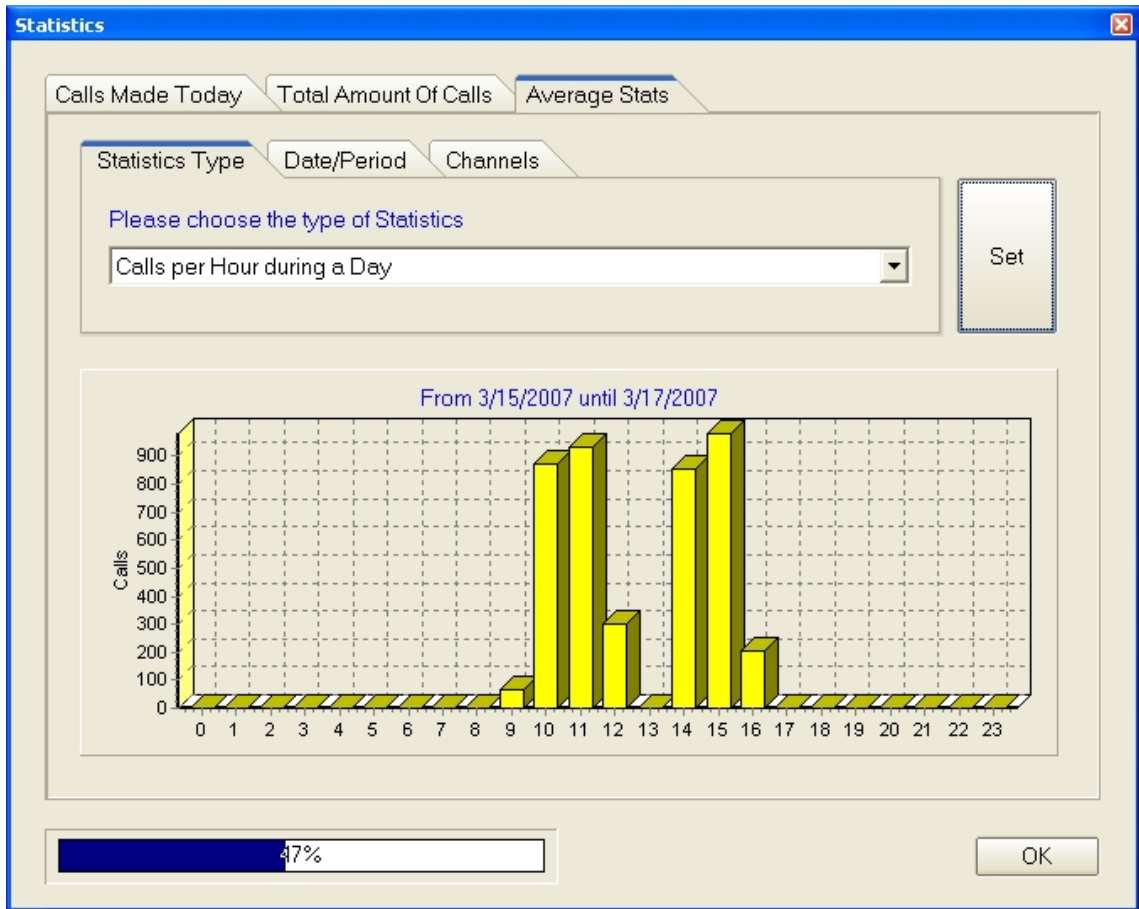


As soon as the incoming call is answered, the popup panel will hide automatically.

11. STATISTICS



Statistical information provided is based upon the information in the voicerecording database. This includes full recordings as well as archives (voice contents that are removed, but which have their header information preserved)



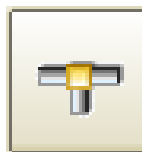
12. CLIENTS

The [CallCatcher.Personal](#) supports real-time monitoring of live conversations over the corporate LAN using streaming techniques. With a minimum of processor overhead and network traffic, crystal clear voice can be delivered to any desktop computer (with Windows compatible sound card) that is connected to the corporate LAN or WAN including the Internet. Besides real-time monitoring, also stored and archived recordings can be played and managed over the corporate LAN.

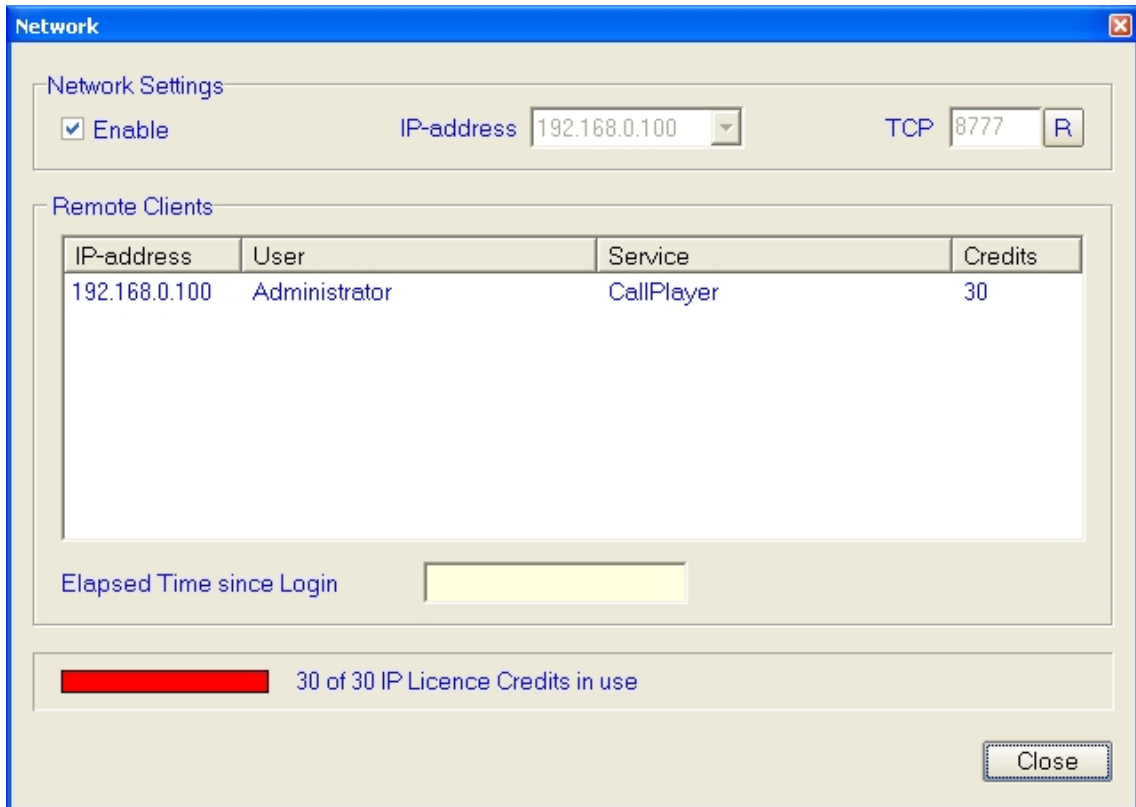
The same high level of security is offered as with local access to the [CallCatcher.Personal](#) server application and its encrypted recordings. The streaming packets travelling over the corporate LAN are heavily encrypted as well.

Only [CallLive](#) (Real Time Monitoring) clients and [CallPlayer](#) (remote and local playback) clients with sufficient monitoring rights can login from their workstation onto the [CallCatcher.Personal](#) server.

Note: the use of remote clients like [CallLive](#) and [CallPlayer](#) is an option for which IP licence credits must be seperately purchased.



12.1 NETWORK CONNECTION STATUS



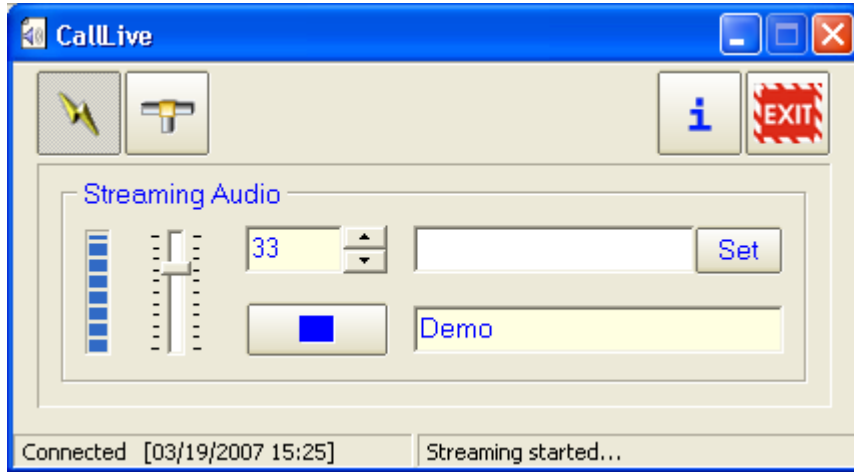
The **Network** status window shows which clients are currently logged in.

Clients that are logged in are shown in the list with their IP address, User name, Type of Service and the amount of required IP licence credits.

As the [CallCatcher.Personal](#) server has default no IP license credits available, it is required to purchase IP license credits in order to be able to use remote clients. There is a limit to the number of clients that can be logged in at the same time. This depends on the total amount of IP credits available and the total accumulated amount of IP credits required by the various client applications.

By focussing on an IP client in the list and clicking the right mouse button, that client can be forced to disconnect.

13. CALL-LIVE

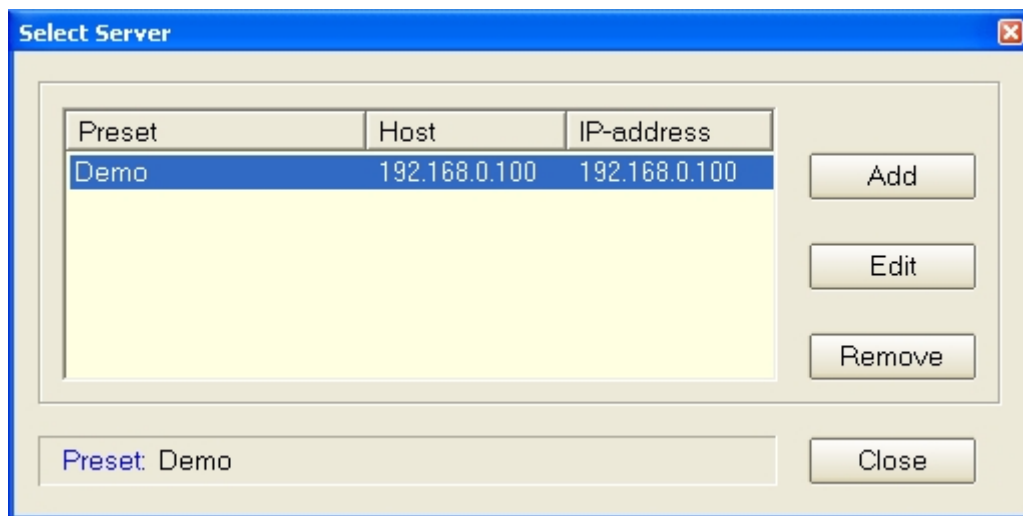


This **CallLive** client application enables to listen, on a remote client machine with a Windows compatible sound card, to live conversations on selected CallCatcher.Personal ports / channels.

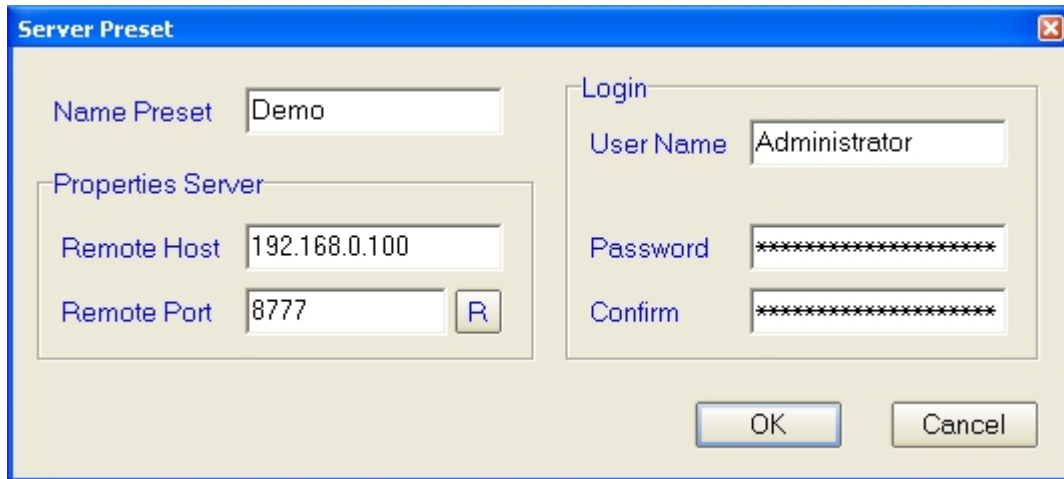
13.1 LOGIN



Using this configuration button a specific CallCatcher.Personal server to login to can be selected from a user defined list of servers.



Select a preset and click on **Close** to activate this preset. New presets can be created using the **Add** button. Adding or editing a preset will make the following screen appear:



The '**Server Preset**' panel must contain the same '**User Name**' and '**Password**' as the user would have on the [CallCatcher.Personal](#) server in order to be able to login.

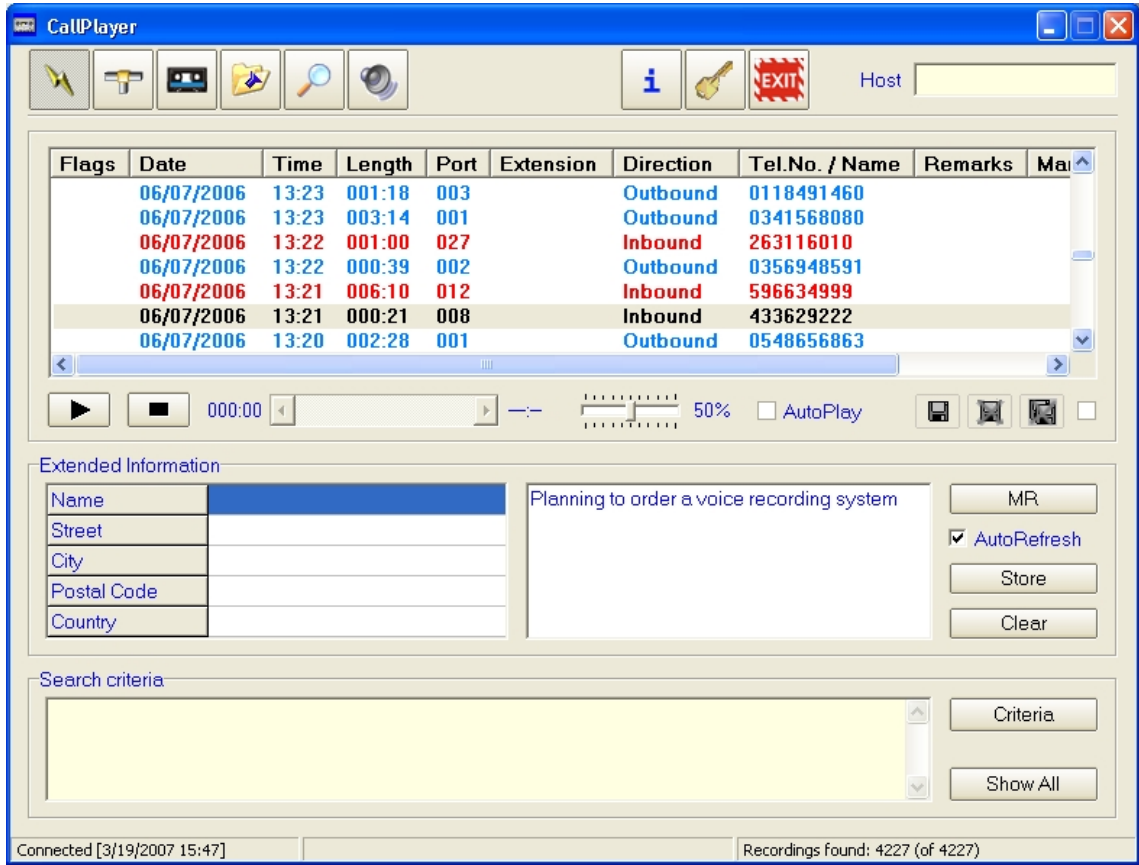


Using the connect button, this client application can login in a secured way and enables a highly secured and encrypted transmission of voice packets over the LAN.

The CallCatcher.Personal port to be monitored, as well as the audio gain can be adjusted on the fly. Using the **Set** button a description can be attached to a specific port number and therefore enabling an easy way of searching for a specific port to listen to in real-time.

Note: make sure the machine is connected to the local LAN to allow CallCatcher.Personal remote client software login.

14. CALL-PLAYER



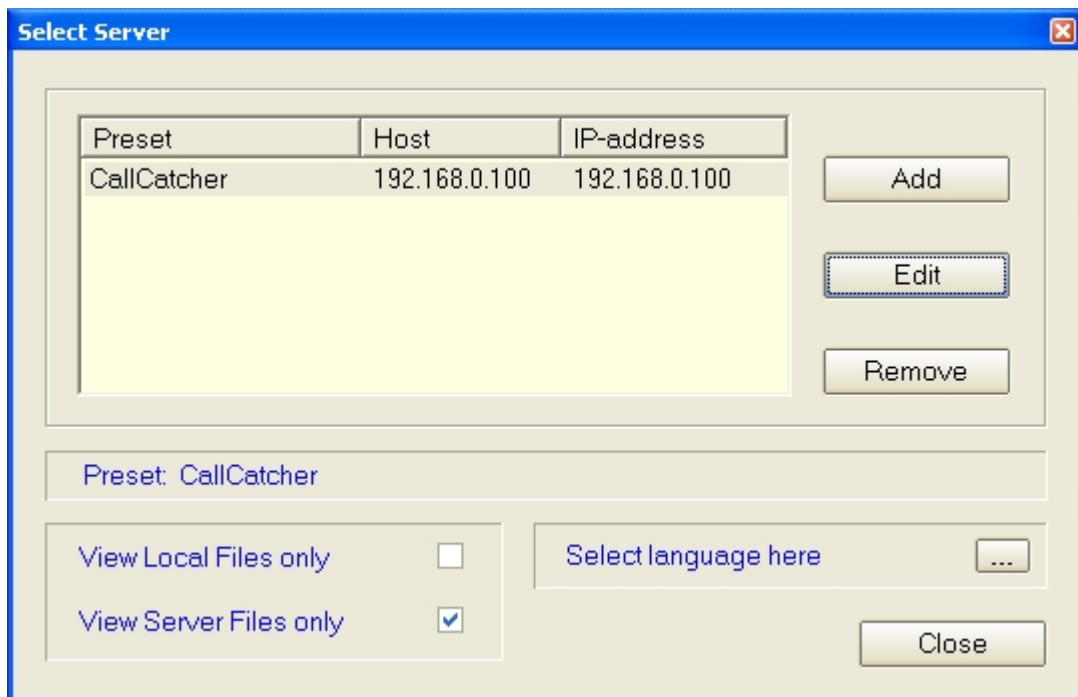
The **CallPlayer** is a client application that is used for searching and listening to recordings. These can be remote recordings (located on the CallCatcher.Personal server), locally saved recordings or backups. Functionally it is almost identical to the 'Monitor' screen in the CallCatcher.Personal server. Please refer to chapter 9 for more information on the searching facilities.

14.1 SAVING RECORDINGS LOCALLY

Recordings can be saved on the local client machine using the save button. This is very useful for important recordings that should not be left on the [CallCatcher.Personal](#) server where these might be archived and deleted after some time. These saved recordings will be kept on the local client machine and will be marked as such in the recordings list.

Multiple recordings can be saved or exported to **.wav** or **.MP3** at the same time. Refer to the '**Drag & Drop**' section regarding filename conventions.

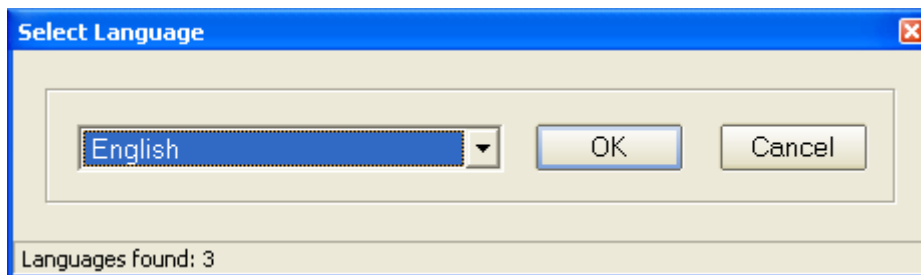
14.2 LOGIN



Login to the CallCatcher.Personal server is described in more detail in the [CallLive](#) section (chapter 14) of this manual. When a password is not programmed in the '**Server Preset**' panel you will be prompted to enter your password during login.

14.3 LANGUAGE SUPPORT

Support for multiple languages is available and can be selected in the panel shown below. Languages can be created and added. See the **.lng** files in the **\Program Files\CallPlayer** directory. Use an existing language, rename it (use a **.lng** extension!) and modify it to suit your new language.



14.4 LOCAL (BACKUP) FILES

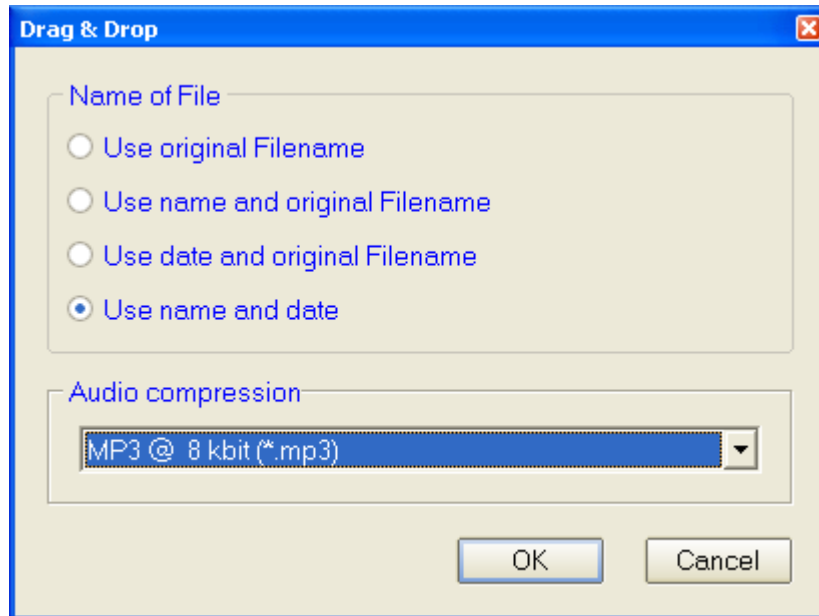
To operate **CallPlayer** in a local playback mode (for reading backups) enable the **'View Local Files only'** checkbox. In this mode only local (backup) files will be shown. Login to the server is required to playback recordings.

14.5 EXTENDED INFORMATION

Any changes made to for example Extended information fields by other clients or changes in the server database are automatically updated at all other **CallPlayer** clients on the network.

14.6 DRAG & DROP

From the main screen, a single recording can be selected with the left mouse button and dragged & dropped onto the Windows desktop or for example into your contacts field in Outlook.



You can configure in which audio format the recording is to be converted into during the Drag & Drop operation. How the filename will be composed can be selected as well.

When using the Save/Export facility and multiple recordings are selected using the **shift** or **ctrl** key, these Drag & Drop settings will be used for generating the filenames.

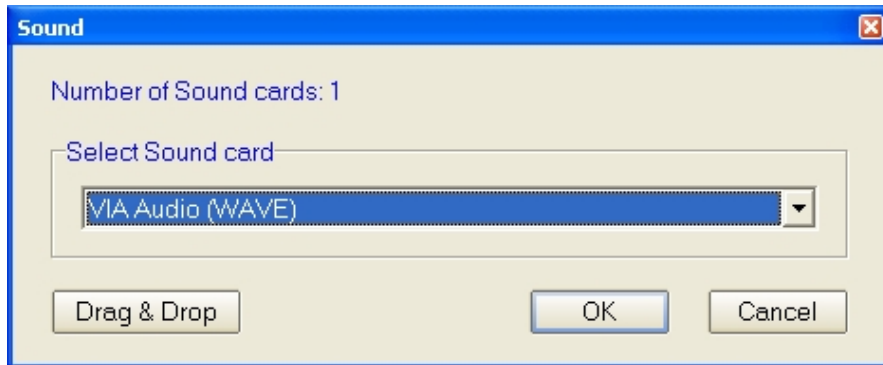


Recordings that are located on the CallCatcher.Personal must be streamed over the network and converted into your specified format. This will be done automatically during Drag & Drop and Save/Export operations. Please take into account that this might take some time in case large recordings are to be processed.

14.7 SELECTING A SOUND RESOURCE



As a Windows machine can have multiple sound resources, a specific sound resource must be selected in case the default resource does not operate with [CallPlayer](#).



15. WIRING DIAGRAMS

Wiring diagrams are provided for the following PCI board / USB box models:

15.1 ANALOG PCI

- A-100-PCI 1 channel Analog (Voltage Detect Parallel mode)

15.2 DIGITAL & ISDN PCI

- DX-100/200-PCI 1/2 channel Digital
- IS-200-PCI 1 port S_o bus ISDN-2 (2 channels)

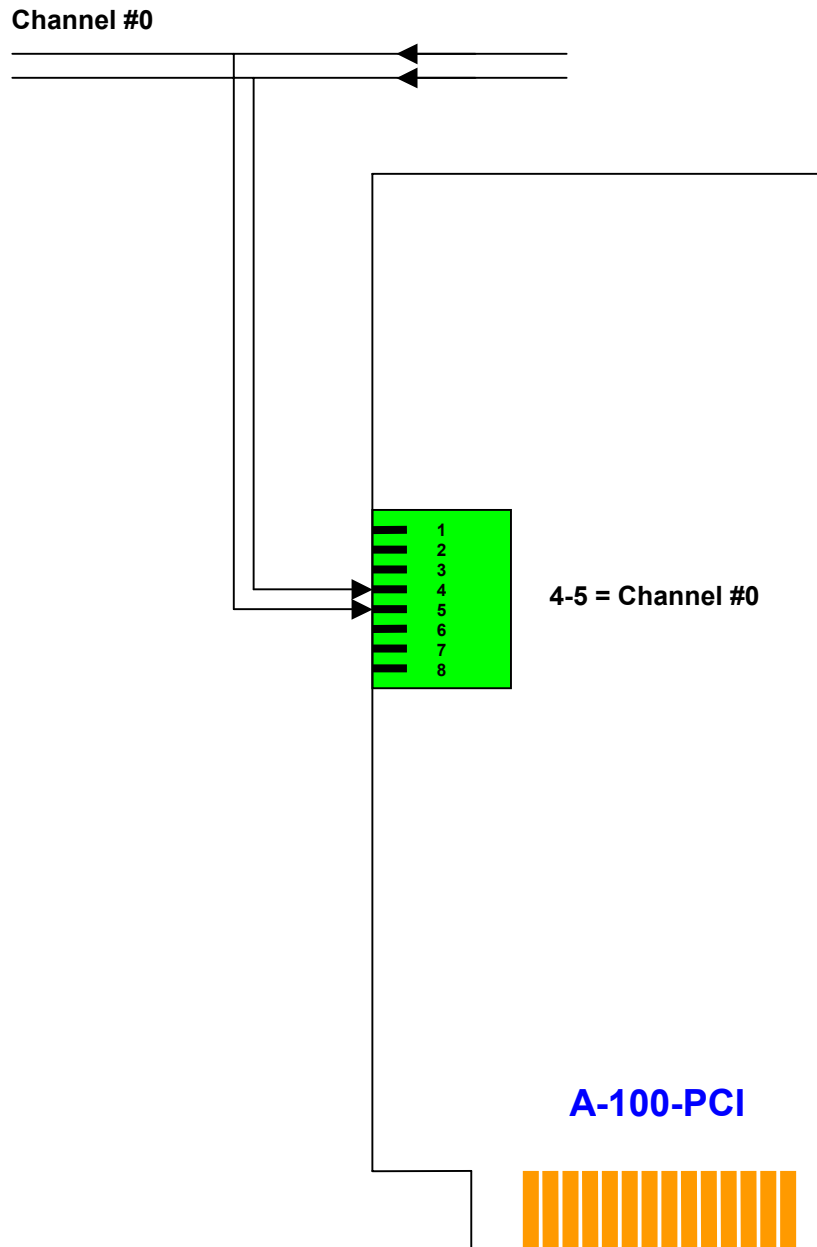
15.3 ANALOG USB

- A-100-USB 1 channel Analog (Voltage Detect Parallel mode)

15.4 DIGITAL & ISDN USB

- DX-100/200-USB 1/2 channel Digital
- IS-200-USB 1 port S_o bus ISDN-2 (2 channels)

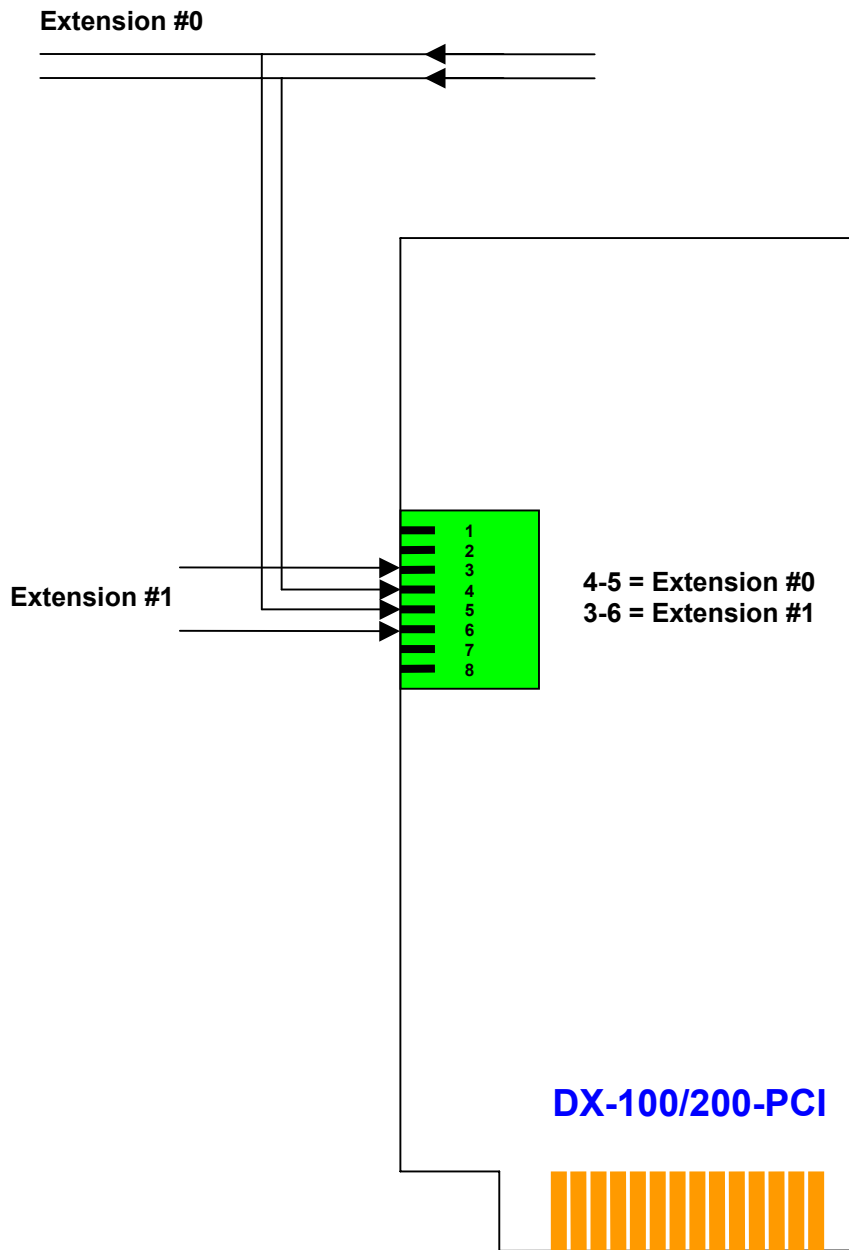
16. ANALOG PCI



High-impedance Voltage Detect Parallel Mode (RJ-45)

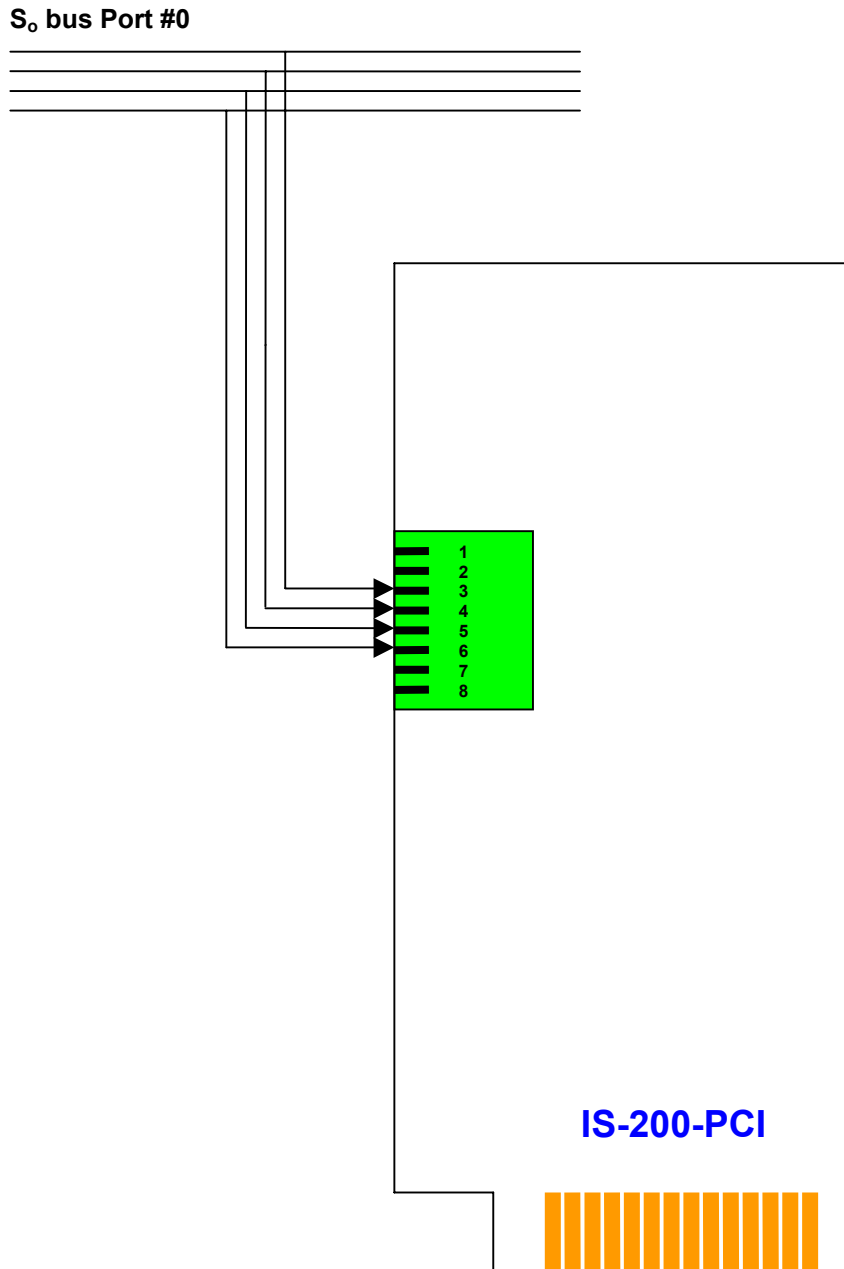
For Analog CO Line, PBX Extension or Voice Activated Audio Port

17. DIGITAL PCI



Digital Extension Parallel Mode (RJ-45) for Digital 2-wire PBX Extensions

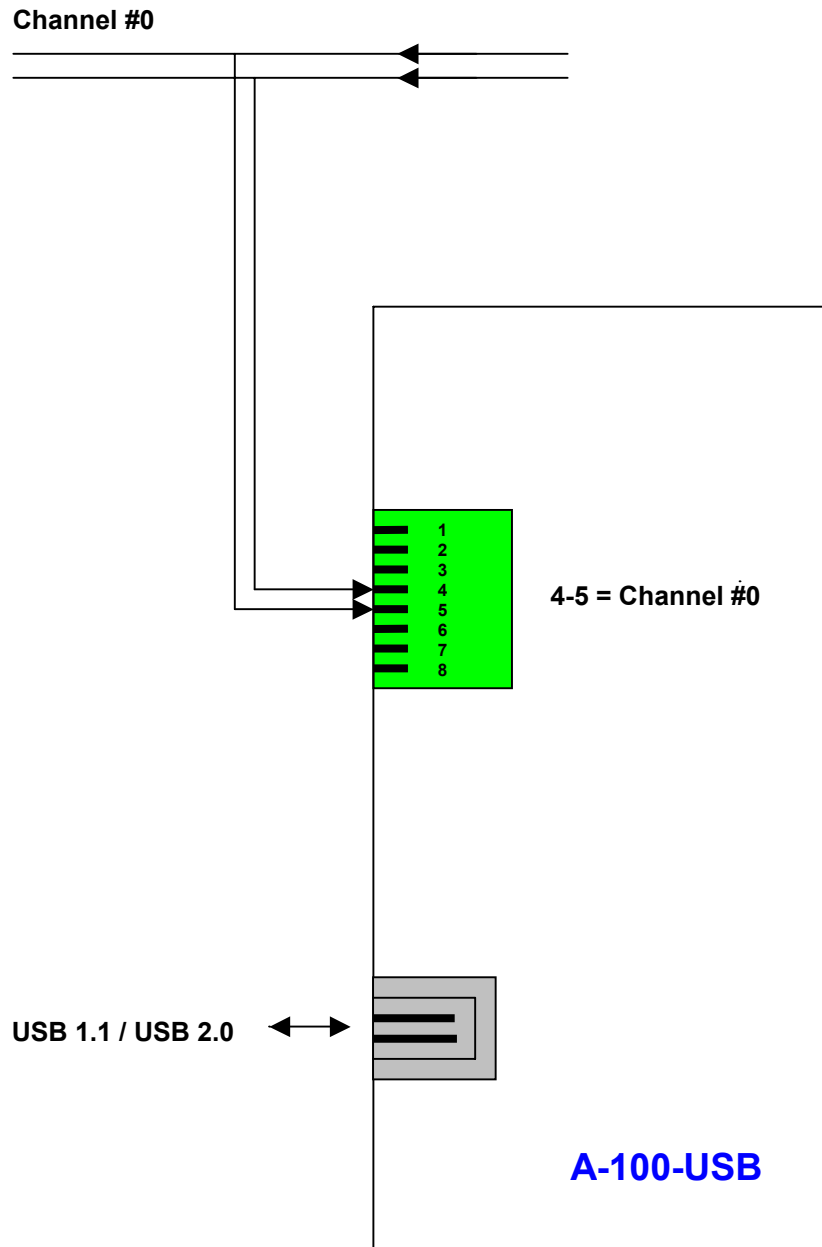
18. ISDN PCI



S₀ bus Parallel Mode (RJ-45)

For Basic Rate ISDN-2 CO line or Digital 4-wire S₀ bus PBX Extension

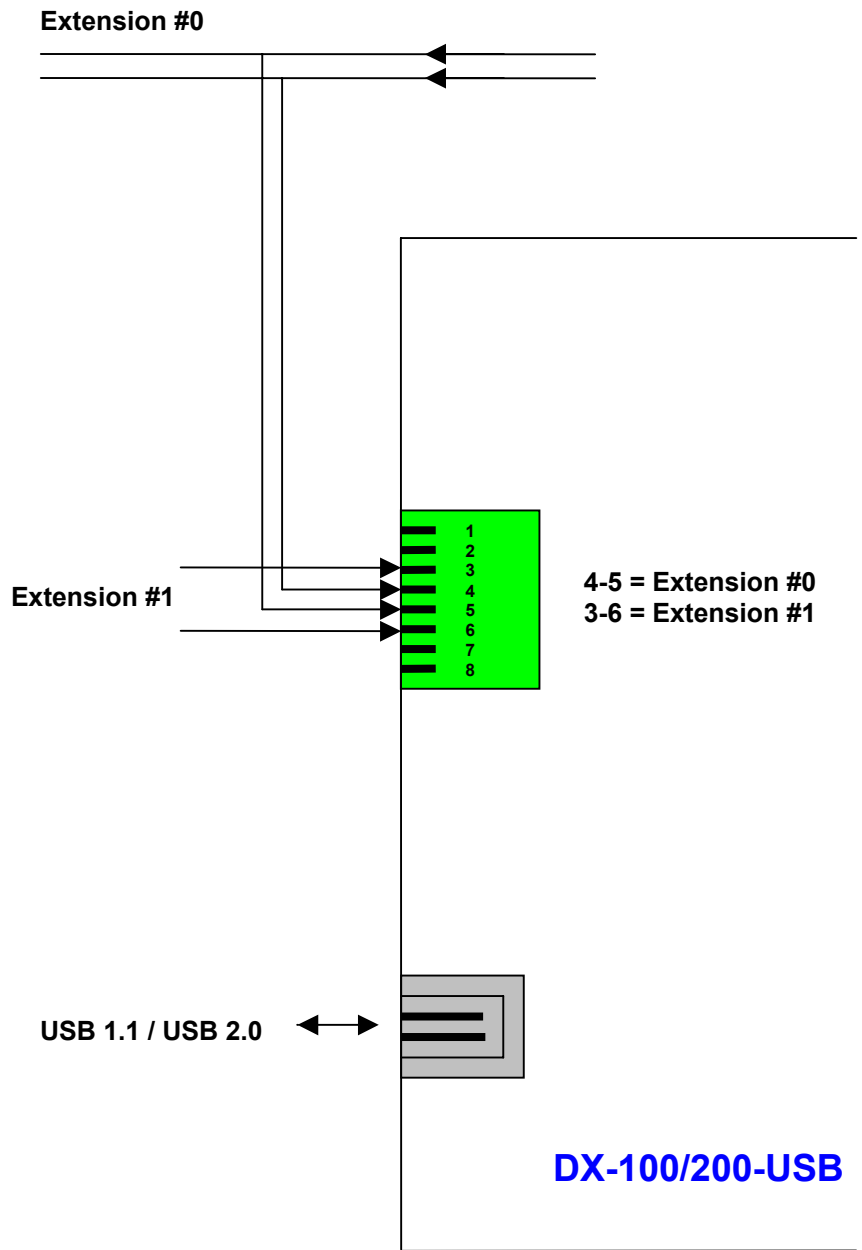
19. ANALOG USB



High-impedance Voltage Detect Parallel Mode (RJ-45)

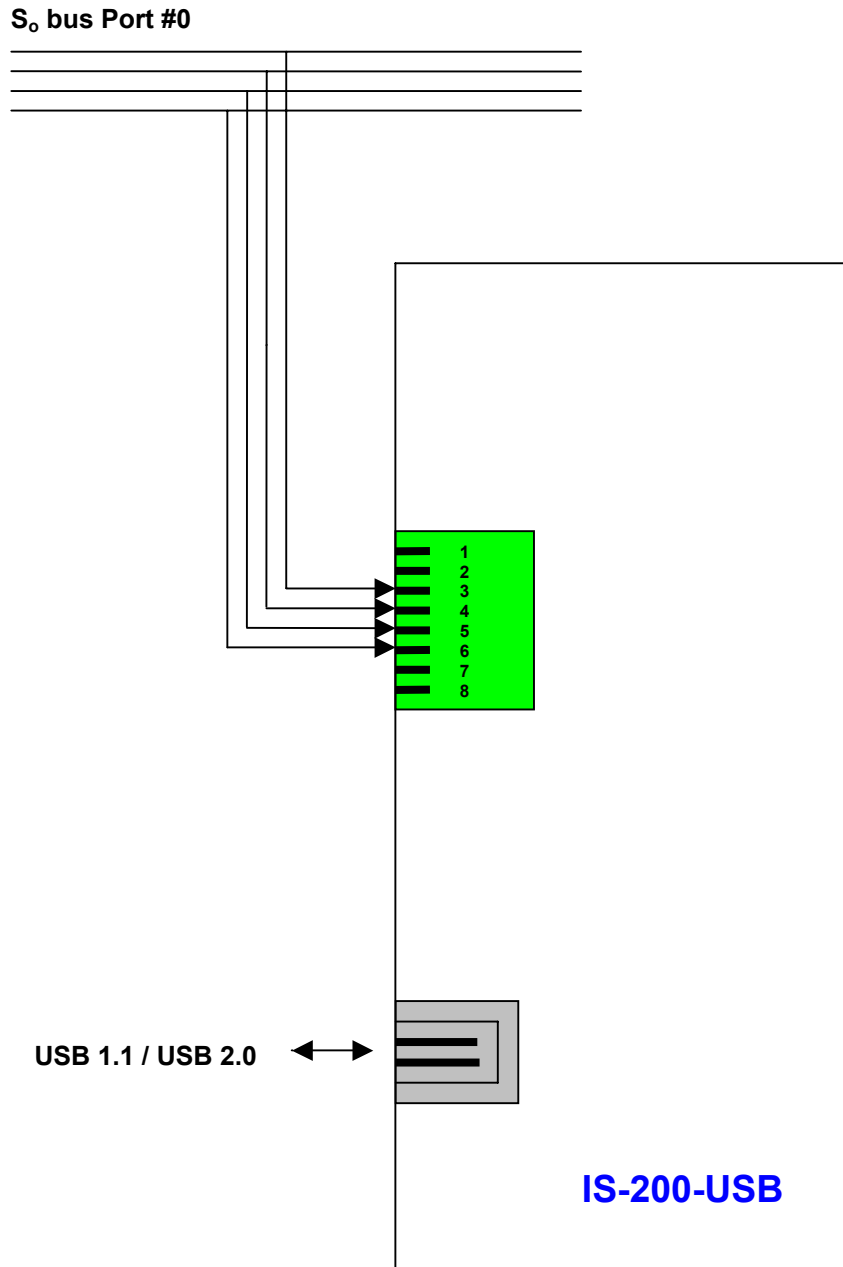
For Analog CO Line, PBX Extension or Voice Activated Audio Port

20. DIGITAL USB



Digital Extension Parallel Mode (RJ-45) for Digital 2-wire PBX Extensions

21. ISDN USB



S₀ bus Parallel Mode (RJ-45)

For Basic Rate ISDN-2 CO line or Digital 4-wire S₀ bus PBX Extension